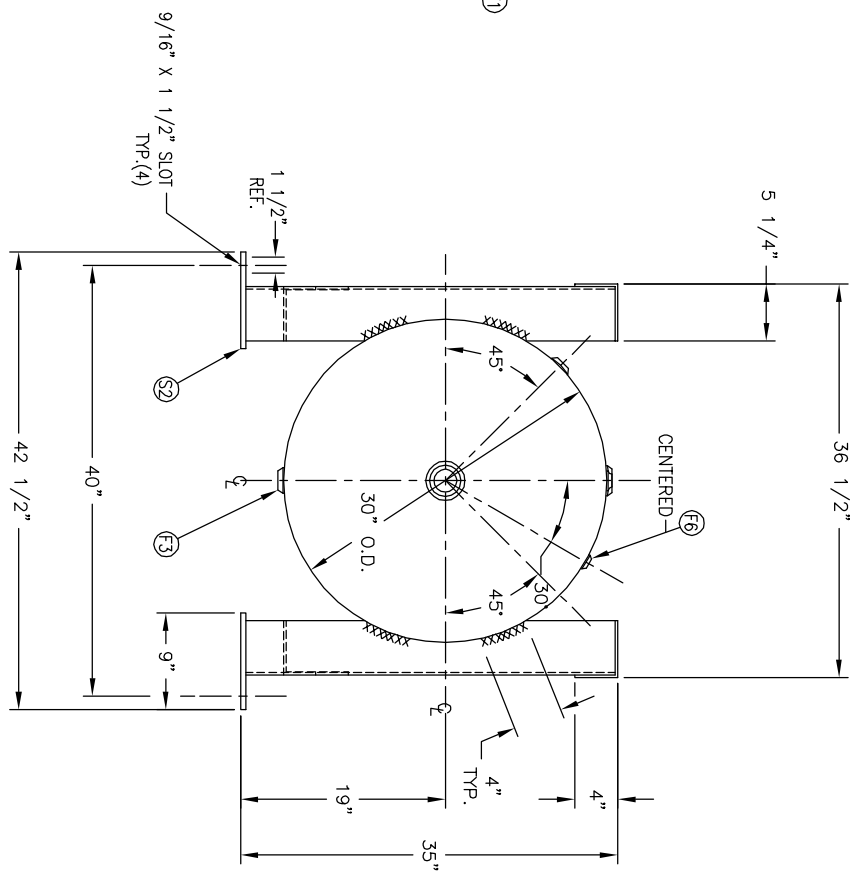
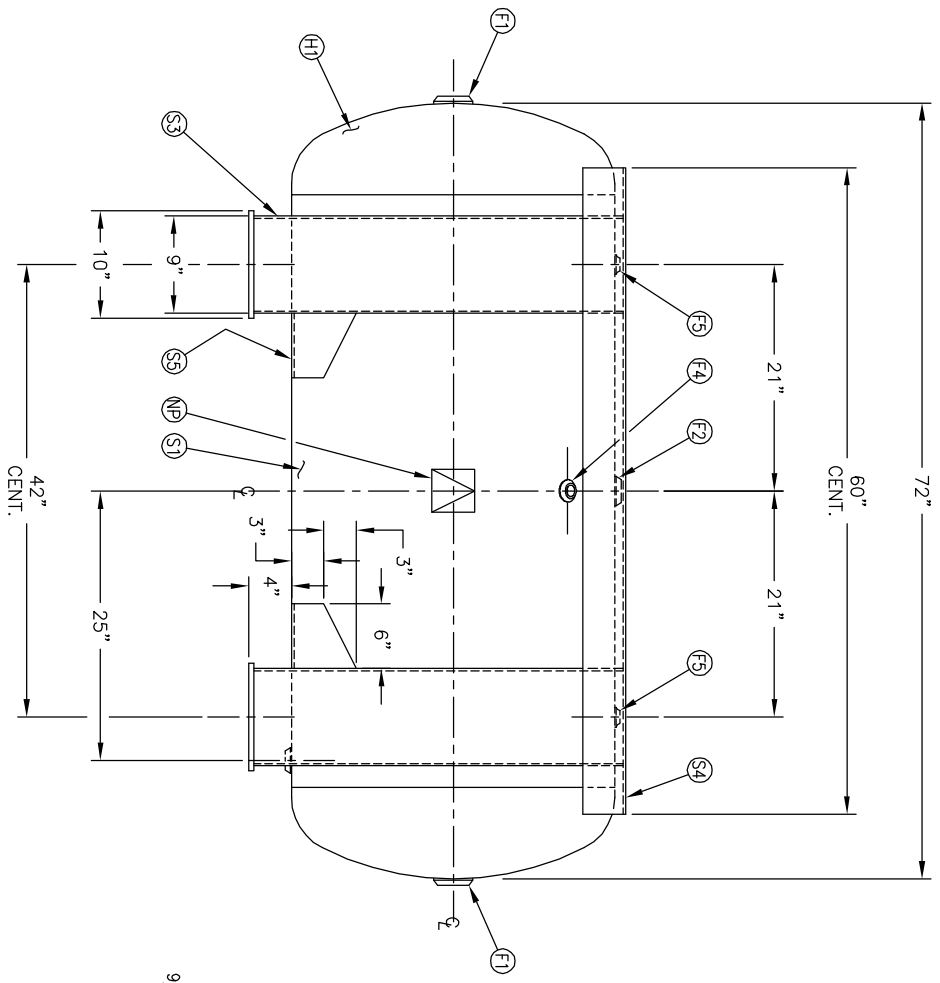


NO.	QTY	DESCRIPTION	SPEC	SUB-DWG.
S1	1			
H1	2			
F1	2	2 NPT 1500# FLAT FLANGE	SA-181-70	
F2	1	1.1/2 NPT 1500# RADIAL FLANGE	SA-181-70	
F3	1	1 NPT 1500# RADIAL FLANGE	SA-181-70	
F4	1	3/4 NPT 1500# RADIAL FLANGE	SA-181-70	
F5	2	1/2 NPT 1500# FLAT FLANGE	SA-181-70	
F6	1	1/8 NPT 1500# FLAT FLANGE	SA-181-70	
S2	4	1/2" X 9" X 10" PAD	SA-36	
S3	4	3/16" X 18 1/4" X 34 1/4" LEG	C1010	
S4	2	1/4" X 8 3/4" X 60" FORMED ANGLE	C1010	
S5	4	1/4" X 6" X 10 1/2" LEG	C1008	
NP	1	ASME DATA PLATE	C1010	



REV	DATE	BY	REVISION	APP	XREF	REV	NOTES

SPECIFICATIONS	
O.D. 30	LGTH. 72
MANIP 200 PSI @ 450 F	
RT - MDMT -20 F @ 200 PSI	
EXMT TEST	
CNR. E0495.1234567890	
WELD DETAILS: M-1932	
STD. TOLERANCES (UNLESS OTHERWISE NOTED): M-2461	

DRWN BY	DATE	SCALE
C. HAYRE <td> </td> <td>NONE</td>		NONE
J. REED <td> </td> <td> </td>		



30" X 72"
GRASSHOPPER TANK
SCALE: NONE
DRAWING NO. 302643