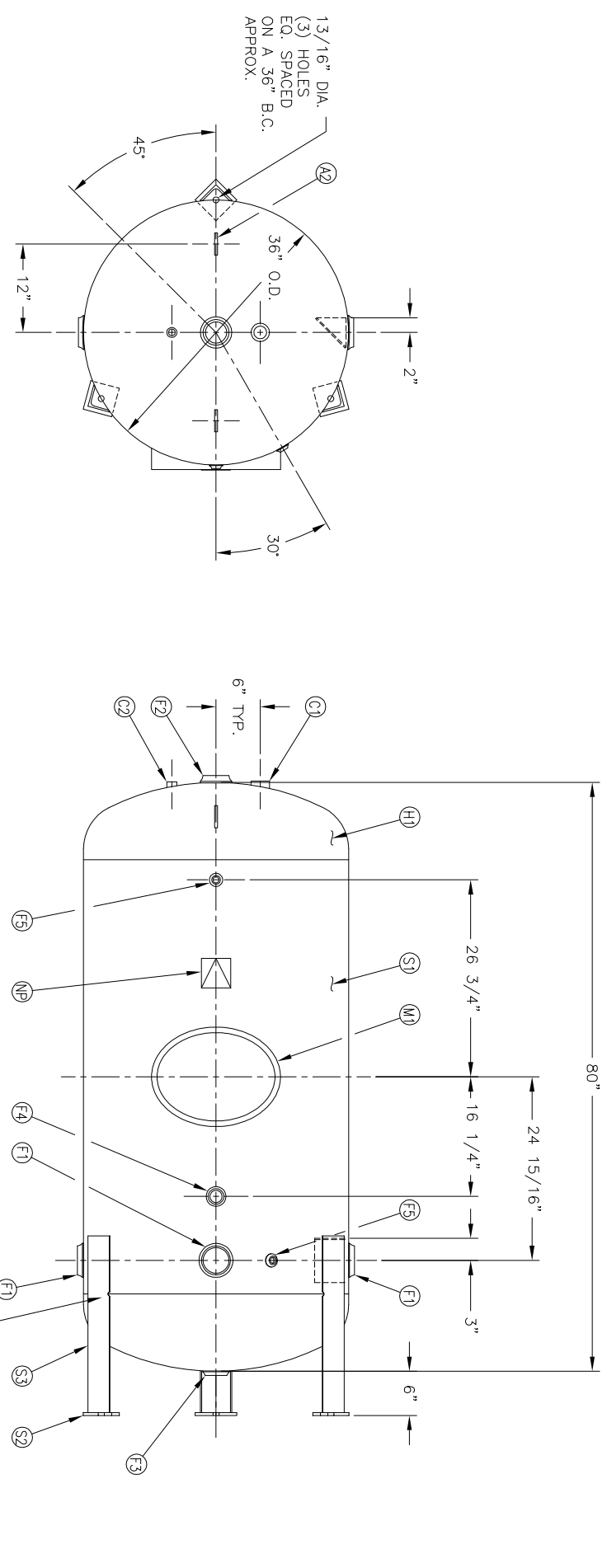


NO. QTY.	DESCRIPTION	SPEC	SUB-DWG.
S1 1			
H1 2			
M1 1	12" X 16" X 3/4" X 4" 300# MANWAY	SA-106-C	
F1 3	3"-NPT 1500# RADIAL FLANGE	SA-181-70	
F2 1	3"-NPT 1500# FLAT FLANGE	SA-181-70	
F3 1	2"-NPT 1500# FLAT FLANGE	SA-181-70	
C1 1	1 1/2"-NPT 3000# FULL COUPLING	SA-105	
F4 1	1 1/4"-NPT 1500# RADIAL FLANGE	SA-181-70	
C2 1	3/4"-NPT 3000# FULL COUPLING	SA-105	
F5 2	1/2"-NPT 1500# FLAT FLANGE	SA-181-70	
A1 1	BAFFLE	A84451	
A2 2	3/8" X 3" X 3" STANDARD LIFT LUG	SA-516-70	
S2 3	3/8" X 4" X 4" PAD	SA-516-70	A84509
S3 3	1/4" X 3" X 3" ANGLE LEG X 24" LONG	SA-36	
NP 1	ASME DATA PLATE	C1010	



DATE	BY	REVISION	APP	XREF	REV

- NOTES**
- INTERIOR FINISH NOTE
1. 1/8" RADIUS ALL EDGES.
  2. GRIND ALL INTERNAL WELDS SMOOTH.
  3. SANDBLAST TO NEAR WHITE FINISH.
  4. ALL VOIDS AND GAPS TO BE CAULKED
  5. COAT WITH DEVOE 233H EPOXY.

**SPECIFICATIONS**

O.D. 36	LGH. 80
MANIP 150	PSI @ 250 F
QAL 320	SA
WT. 890#	CUT.

**MANCHESTER TANK**

VERTICAL EPOXY LINED WATER TANK

SCALE: NONE

DRAWING NO. 302516

ALL OPEN TAPS TO HAVE PLASTIC THREAD PROTECTORS

WELD DETAILS: M-1932  
STD. TOLERANCES (UNLESS OTHERWISE NOTED): M-2461

DATE	DATE	SCALE: NONE
APP. BY	DATE	DRAWING NO. 302516