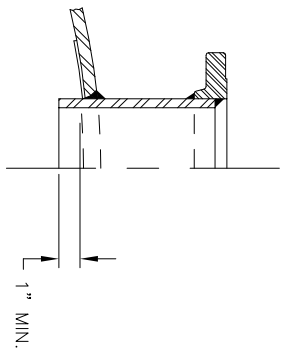
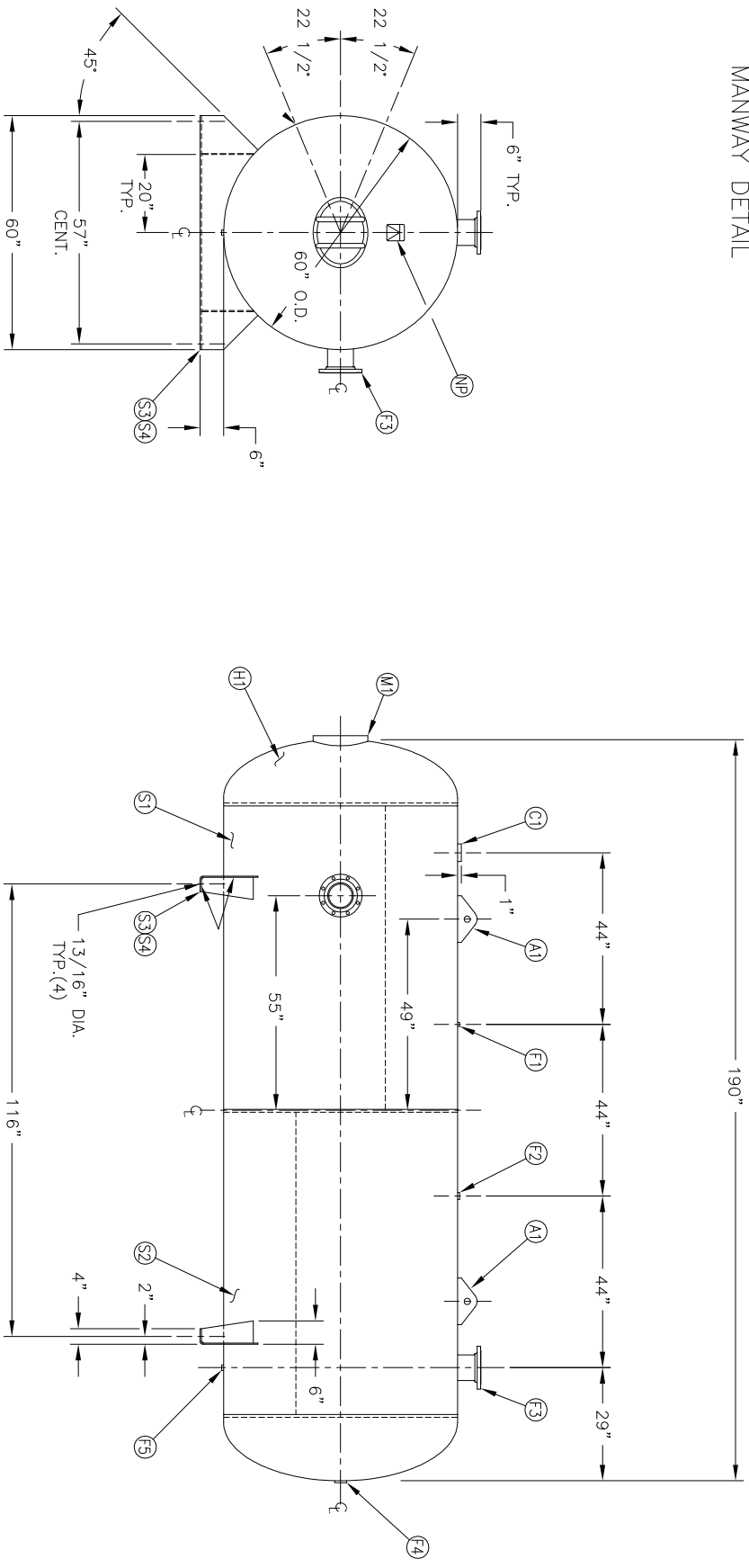


MANWAY DETAIL



NOZZLE DETAIL

| NO. QTY | DESCRIPTION | SPEC | SUB-DWG. |
|---------|---|--------------------|----------|
| C1 1 | 3"-NPT 3000# HALF COUPLING | SA-105 | |
| F1 1 | 1/4"-NPT 1500# FLAT FLANGE | SA-181-70 | |
| F2 1 | 1"-NPT 1500# RADIAL FLANGE | SA-181-70 | |
| F3 2 | 6" 150# ANSI REF.SO. FLANGE | SA-105 | |
| F3 2 | 6" SCH.80 PIPE X 7 1/2" LONG | SA-106-B | |
| F3 2 | .134 X 8 5/8" O.D. X 6 5/8" I.D. BACKING RING | C1008 | |
| F4 1 | 2"-NPT 1500# FLAT FLANGE | SA-181-70 | |
| F5 1 | 3/4"-NPT 1500# RADIAL FLANGE | SA-181-70 | |
| M1 1 | 12" X 16" X 3/4" X 4" 300# MANWAY | SA-106-C/SA-675-70 | |
| S3 2 | 5/16" X 18 1/8" X 60" SADDLE BRACKET | SA-56/C1008 | |
| S4 4 | 5/16" X 6" X 13" GUSSET | SA-36/C1008 | |
| A1 2 | 3/4" X 5" X 12" STANDARD HORIZ. LIFT LUG | | |
| NP 1 | ASME DATA PLATE | C1010 | A84388 |



| SWM | DATE | BY | REVISION | APP | XREF | REV | NOTES | SPECIFICATIONS |
|-----|------|----|----------|-----|------|-----|--|--|
| | | | | | | | BREAK ALL EXPOSED INTERIOR NOZZLE EDGES ALL FLANGE BOLT HOLES TO SPRADLE VESSEL CENTERLINES | O.D. 60 LGH. 190 MAMP 165 PSI @ 450 F CSM 1601.9 WELD DETAILS: M-1932 STD. TOLERANCES (UNLESS OTHERWISE NOTED): M-2461 |

MANCHESTER
TANK

Q:\3000

**60" X 190" HORIZ.
STANDARD AIR RECEIVER**

SCALE: NONE
DRAWING NO. 302498

| | | |
|----------|------|--------------------|
| DATE | DATE | SCALE: NONE |
| DRAWN BY | DATE | DRAWING NO. 302498 |
| APP. BY | DATE | |