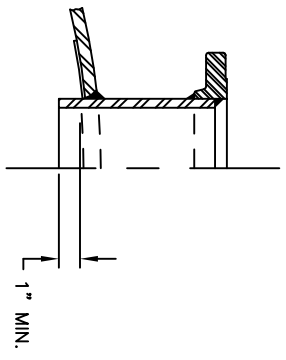
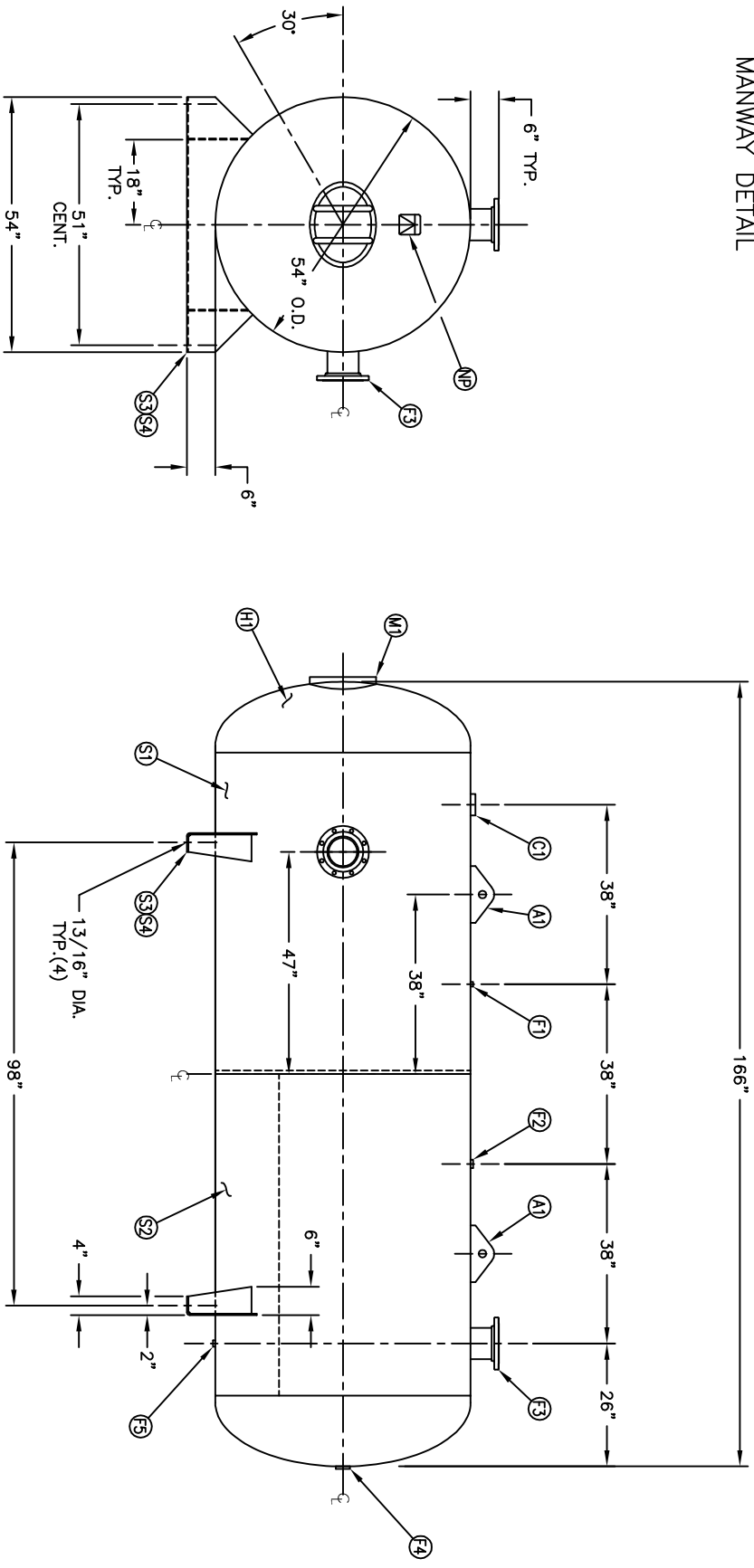


MANWAY DETAIL



NOZZLE DETAIL

NO. QTY	DESCRIPTION	SPEC	SUB-DWG.
S1 1			
S2 1			
H1 2			
C1 1	3"-NPT 3000# HALF COUPLING	SA-105	
F1 1	1/4"-NPT 1500# FLAT FLANGE	SA-181-70	
F2 1	1"-NPT 1500# RADIAL FLANGE	SA-181-70	
F3 2	6" 150# ANSI RF.SO. FLANGE	SA-105	
F3 2	6" SCH.80 PIPE X 7 1/2" LONG	SA-106-B	
F4 1	.134 X 8 5/8" O.D. X 6 5/8" I.D. BACKING RING	C1008	
F5 1	2"-NPT 1500# FLAT FLANGE	SA-181-70	
F5 1	3/4"-NPT 1500# RADIAL FLANGE	SA-181-70	
M1 1	12" X 16" X 16" X 3/4" X 4" 300# MANWAY	SA-675-10/SA-106-C	
S3 2	1/4" X 17 1/2" X 54" SADDLE BRACKET	SA-36/C1008	
S4 4	1/4" X 6" X 12 1/2" GUSSET	SA-36/C1008	
A1 2	3/4" X 5" X 12" STANDARD HORIZ. LIFT LUG		
NP 1	ASME DATA PLATE	C1010	A84358



SW/ DATE BY	REVISION	APP XREF REV	NOTES	SPECIFICATIONS	DRAWN BY	DATE	SCALE: NONE
			BREAK ALL EXPOSED INTERIOR NOZZLE EDGES ALL FLANGE BOLT HOLES TO STRADDLE VESSEL CENTRELINES	O.D. 54 LGTH. 166 MHP 165 PSI @ 450 F QUAL 1550 SA WT. 2700#			
				CODE ASME SECT. VIII, DIV. 1 PER DATE OF DWG/LAST REV			
				STD. TOLERANCES (UNLESS OTHERWISE NOTED): M-2461			



54" X 166"  
STANDARD AIR RECEIVER

APP. BY	DATE	DRAWING NO.
		302496