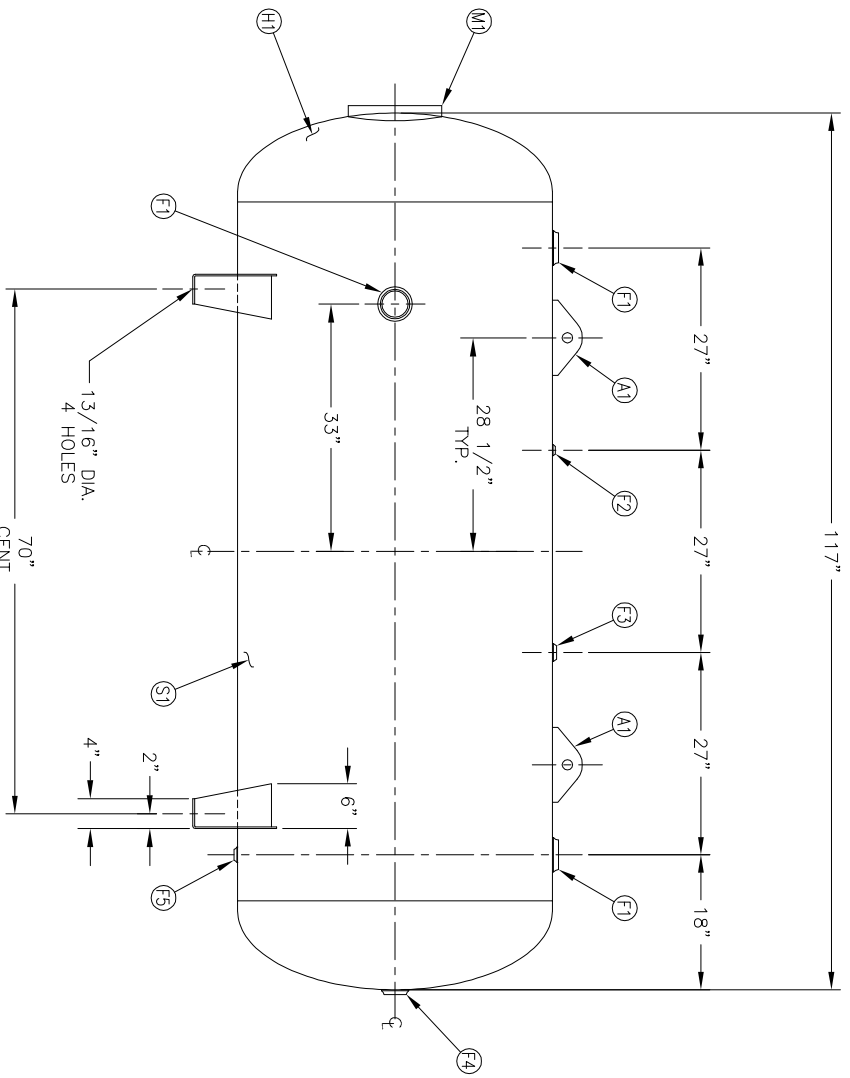
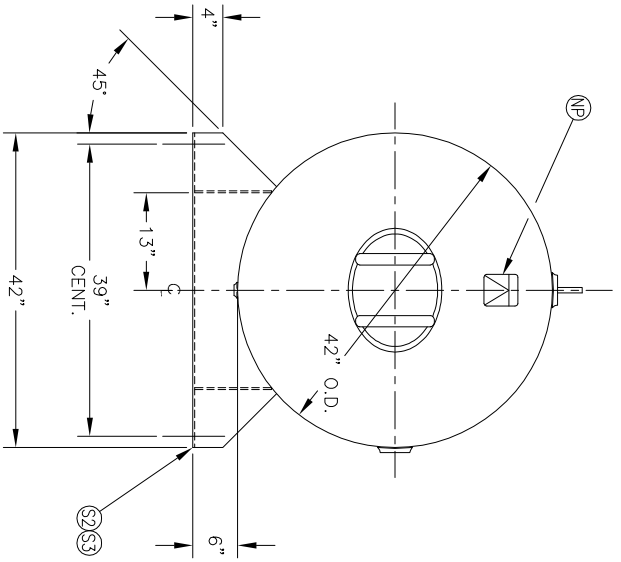


MANWAY DETAIL



NO. QTY	DESCRIPTION	SPEC	SUB-DWG.
S1 1			
H1 2			
F1 3	3"-NPT 1500# RADIAL FLANGE	SA-181-70	
F2 1	1/4"-NPT 1500# FLAT FLANGE	SA-181-70	
F3 1	1"-NPT 1500# RADIAL FLANGE	SA-181-70	
F4 1	2"-NPT 1500# FLAT FLANGE	SA-181-70	
F5 1	3/4"-NPT 1500# RADIAL FLANGE	SA-181-70	
M1 1	12" X 16" X 3/4" X 4" 300# MANWAY	SA-675-70/SA-106-C	
S2 2	1/4" X 14 3/4" X 42" SADDLE BRACKET	C1008	
S3 4	1/4" X 6" X 10" GUSSET	C1008	
A1 2	1/2" X 4" X 10" STANDARD LIFT LUG FOR HORIZ.		
NP 1	ASME DATA PLATE	C1010	A84540

SWM DATE	BY	REVISION	APP	XREF	REV	NOTES	SPECIFICATIONS

WELD DETAILS: M-1932
STD. TOLERANCES (UNLESS OTHERWISE NOTED): M-2461

CORR. N/A

PER DATE OF DWG/LAST REV

SH. MATL.
HD. MATL.
GAL. 660 SA.
WT. 1375# CUFT.
CORR. ALW. SH. HD.
CODE ASME SECT VIII, DIV. 1

42" X 117"
STANDARD AIR REC.

SCALE: NONE
DRAWING NO. 302490