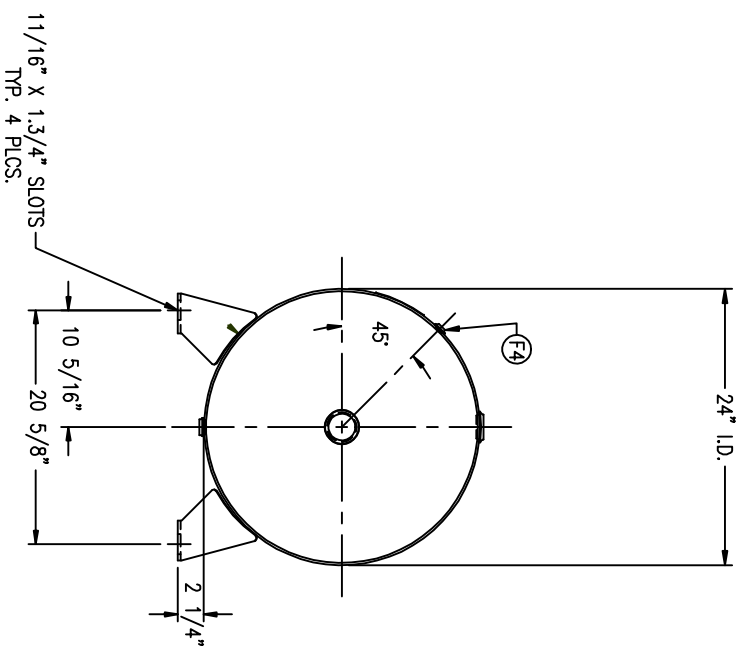
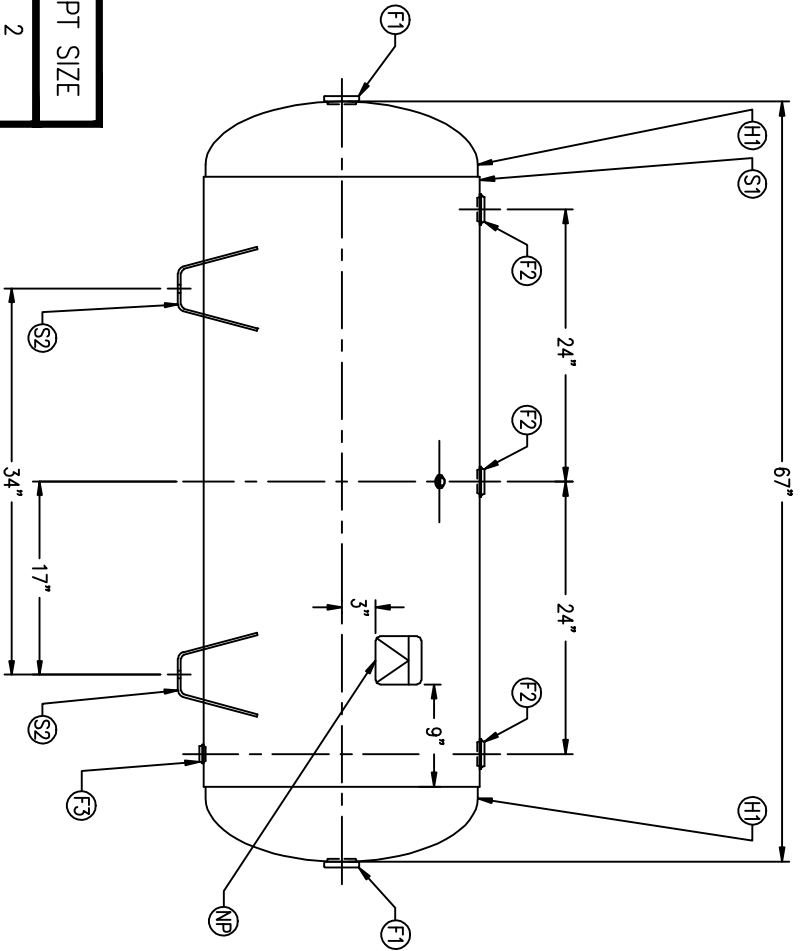


CODE/ADDENDA \_\_\_\_\_ APPROVED \_\_\_\_\_  
 RELEASED FOR PRODUCTION \_\_\_\_\_  
 Q.C. \_\_\_\_\_ DATE \_\_\_\_\_

FIND NO.	NPT SIZE
F1	2
F2	1 1/2
F3	3/4
F4	1/4

S/M DATE	BY	REVISION



APP	XREF	REV
C809	B	
C865	A	

NOTES

SPECIFICATIONS

I.D. 24 LGTH. 67  
 MAWP 200 PSI @ 650 F

GAL 120 S.A. 37.5  
 WT. 311# CU.FT. 16.0

CRN E7400.2C  
 WELD DETAILS: M-1932  
 STD. TOLERANCES (UNLESS OTHERWISE NOTED): M-2461

CODE: ASME SEC. VIII DIV. 1  
 LATEST EDITION & ADDENDA



\\CORP2\DWG\302

# HORIZONTAL AIR RECEIVER

DRAWN BY	DATE	SCALE:	NONE
APP. BY	DATE	DRAWING NO.	302479