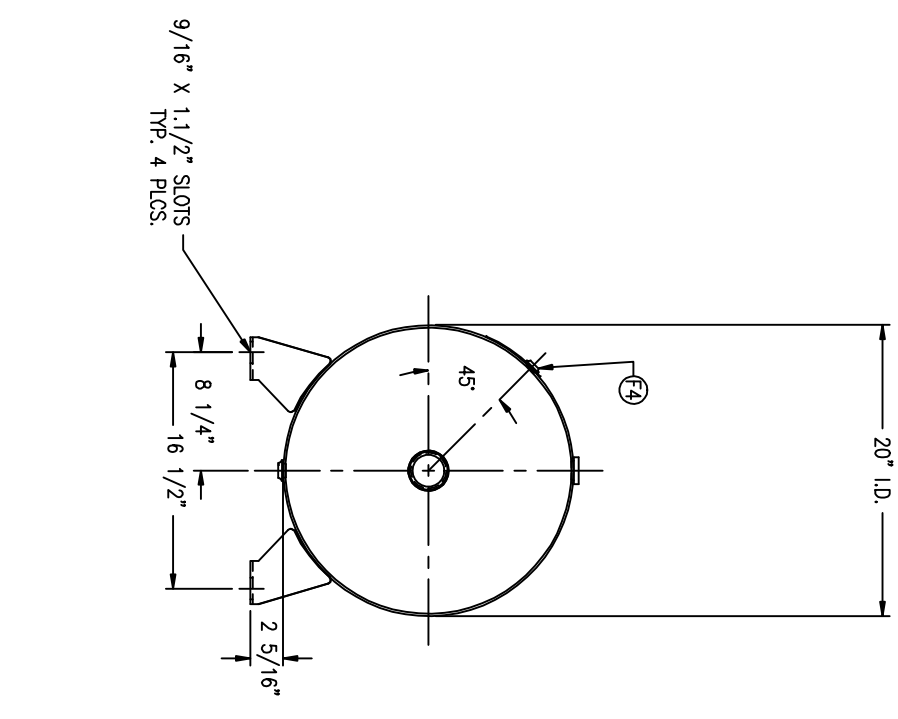
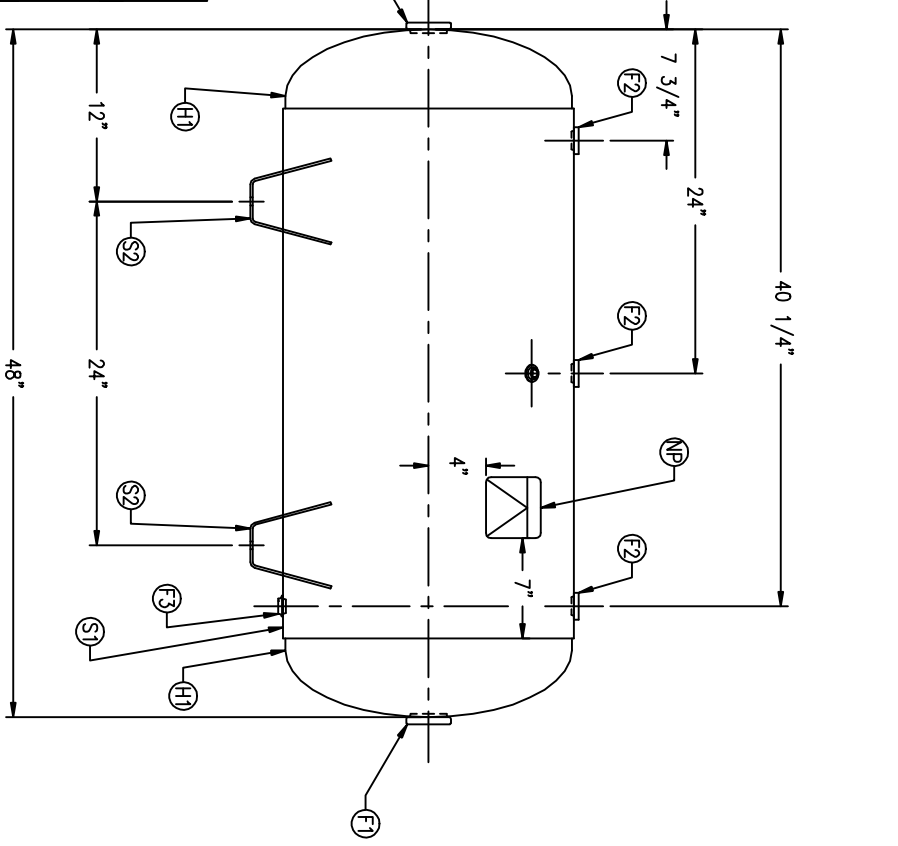


CODE/ADDENDA 2004/2006 APPROVED KM
 RELEASED FOR PRODUCTION
 Q.C. _____ DATE _____

FIND NO.	NPT SIZE
F1	2
F2	3/4
F3	1/2
F4	1/4



SYMBOL	DATE	BY	REVISION	APP	XREF	REV	NOTES

SPECIFICATIONS

I.D. 20 LGTH. 48
 MAMP 200 PSI @ 650 °F
 CRN E7399.2C
 W

GAL. 60 S.A. 22.6
 WT. 163# CULFT. 8.0

CODE: ASME SEC. VIII DIV. I,
 LATEST EDITION & ADDENDA

WELD DETAILS: M-1932
 STD. TOLERANCES (UNLESS OTHERWISE NOTED): M-2461

SCALE: NONE
 DRAWING NO. 302473

HORIZONTAL AIR RECEIVER

MANCHESTER
 H.A. 3000