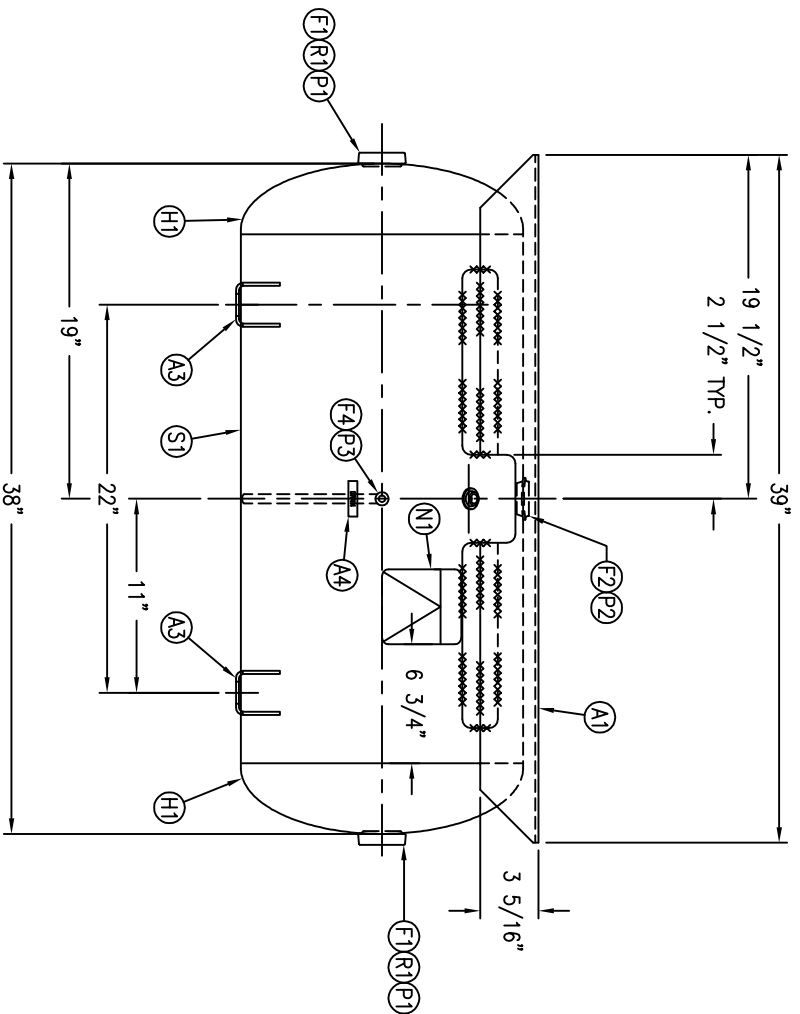
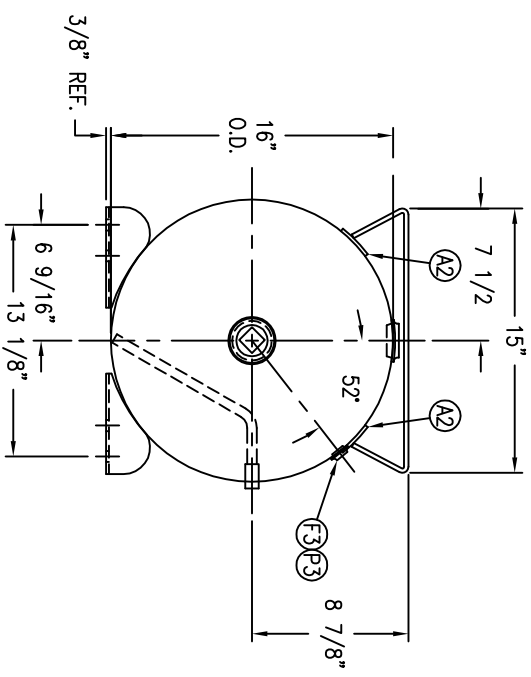


CODE/ADDENDA _____ APPROVED _____
 RELEASED FOR PRODUCTION _____
 Q.C. _____ DATE _____



SYM	QTY	DESCRIPTION	SA
F1	2	FLANGE: 1 1/2 NPT FLAT	SA181-70
F2	1	FLANGE: 1:1/4 NPT	SA181-70
F3	1	FLANGE: 1/4 NPT	SA181-70
F4	1	DRAIN PIPE ASY: 1/4 NPT	SA105

SYM	DATE	BY	REVISION	APP	NOTES

SPECIFICATIONS	
O.D.: 16	LGTH: 38
MAWP: 200 PSI @ 400° F	SH: MAT'L:
	HD: MAT'L:
	GAL: 30
	WGT: 160 # CU.FT:
CRN# F2151.1C	CODE: ASME SECT. VIII, DIV.1
	PER DATE OF DWG/LAST REV



Q1, 3000

HORIZONTAL AIR RECEIVER

DRAWN BY	DATE	SCALE: NONE
APP. BY	DATE	DRAWING NO. 302472

WELD DETAILS M-1932
 STD. TOLERANCES (UNLESS OTHERWISE NOTED) M-2461