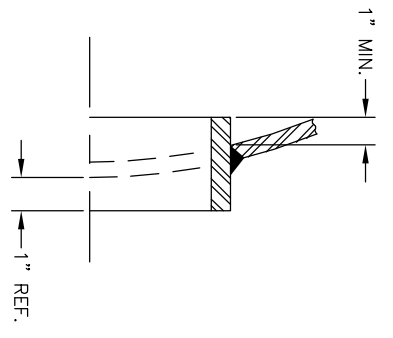
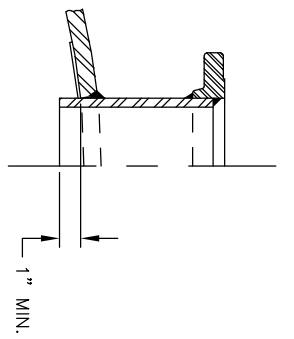


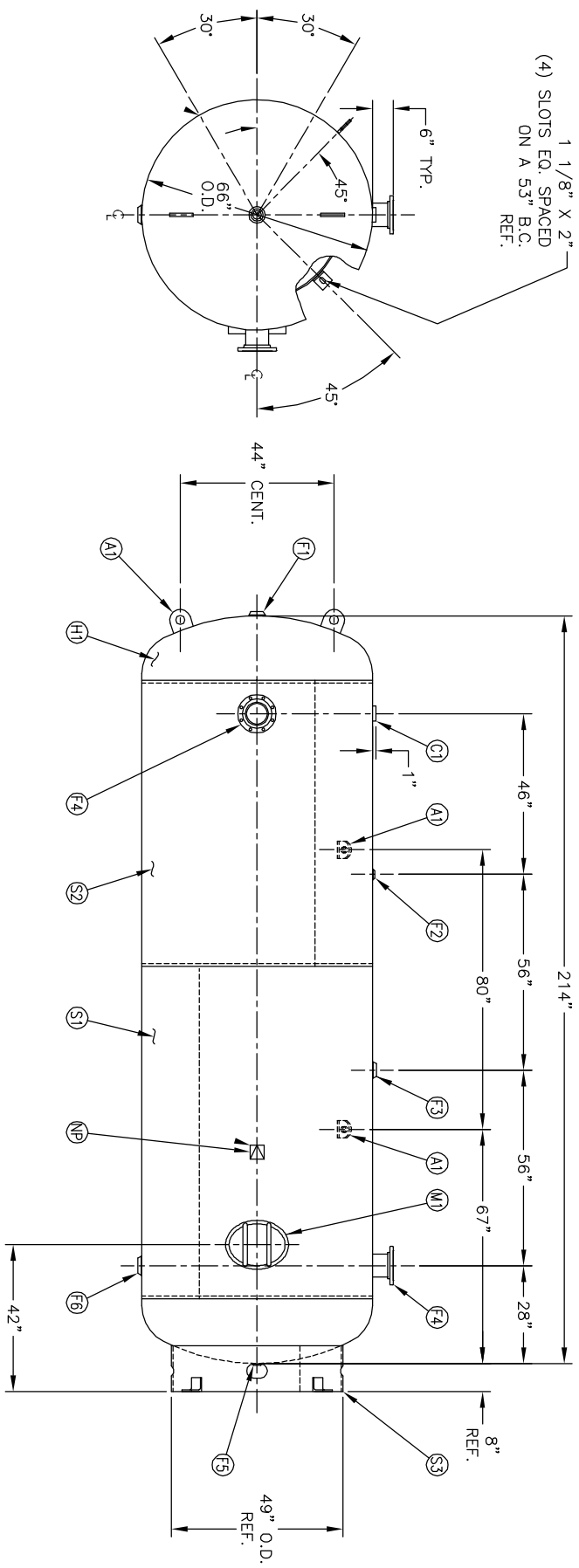
CODE/ADDENDA APPROVED
 RELEASED FOR PRODUCTION
 Q.C. _____ DATE _____



MANWAY DETAIL



NOZZLE DETAIL



1 1/8" X 2"
 (4) SLOTS EQ. SPACED
 ON A 53" B.C.
 REF.

| SM | DATE | BY | APP | REVISION |
|----|------|-----|-----|----------|
| A | | AW | AW | |
| B | | JC | JC | |
| C | | BAK | AMA | |
| D | | BS | BS | |

NOTES
 BREAK ALL EXPOSED INTERIOR NOZZLE EDGES
 ALL FLANGE BOLT HOLES TO STRADDLE VESSEL CENTRELINES

SPECIFICATIONS

| | | | | | |
|------------------|---------------------------|--------------------------|-----|------|-----------------------|
| O.D. | 66 | LGH. | 214 | SH. | |
| MANP | 185 | PSI @ 400 F | | HD. | |
| RT- | MDMT | T θ | PSI | CAL. | 3000 S.A. 326.60 |
| EXMT | | TEST | | WT. | 5700 CULF. 393.35 |
| CRN | --- | | | SH | HD |
| WELD DETAILS: | M-1932 | PER DATE OF DWG/LAST REV | | CODE | ASME SECT.VIII, DIV.1 |
| STD. TOLERANCES: | (UNLESS OTHERWISE NOTED): | M-2461 | | | |



66" X 214" VERTICAL
 STANDARD AIR RECEIVER

| | | | |
|----------|------|-------------|--------|
| DRAWN BY | DATE | SCALE: | NONE |
| APP. BY | DATE | DRAWING NO. | 302465 |

| NO. | QTY | DESCRIPTION | SPEC | SUB-DWG. |
|-----|-----|---|-----------|----------|
| S1 | 1 | | | |
| S2 | 1 | | | |
| H1 | 2 | | | |
| C1 | 1 | 3 NPT 3000# HALF COUPLING | SA-105 | |
| F1 | 1 | 1 NPT 1500# FLAT FLANGE | SA-181-70 | |
| F2 | 1 | 1/4 NPT 1500# FLAT FLANGE | SA-181-70 | |
| F3 | 1 | 1 NPT 1500# RADIAL FLANGE | SA-181-70 | |
| F4 | 2 | 6" SCH.80 ANSI RF SO. FLANGE | SA-105 | |
| F4 | 2 | 6" SCH.80 PIPE X 7 1/2" LONG | SA-106-B | |
| F4 | 2 | 1.34 X 6 5/8" I.D. X 8 5/8" O.D. BACKING RING | C1008 | |
| F5 | 1 | 1.1/4 NPT 1500# FLAT FLANGE | SA-181-70 | |
| F6 | 1 | 1.1/4 NPT 1500# RADIAL FLANGE | SA-181-70 | |
| M1 | 1 | 12" X 16" X 3/4" X 4" 300# MANWAY (ORU 0H7098.5C) | SA-106-C | |
| S3 | 1 | STANDARD 8" SKIRT & CLIP ASSY. FOR 66" DIA. | A84526 | |
| A1 | 4 | 3/4" X 5" X 5" STANDARD LIFT LUG | A84524 | |
| NP | 1 | ASME DATA PLATE | C1010 | |