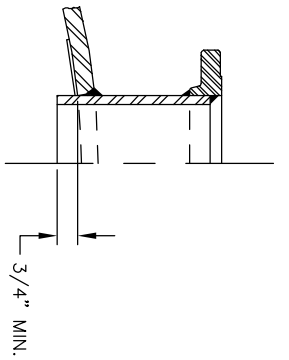


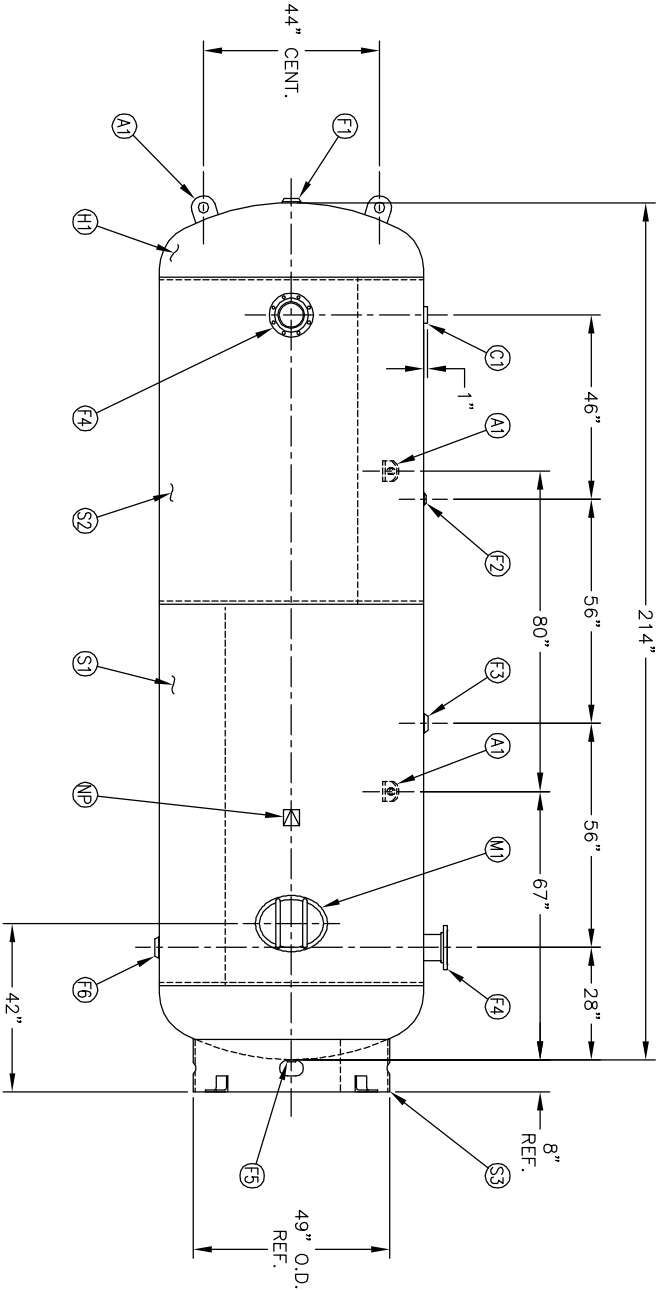
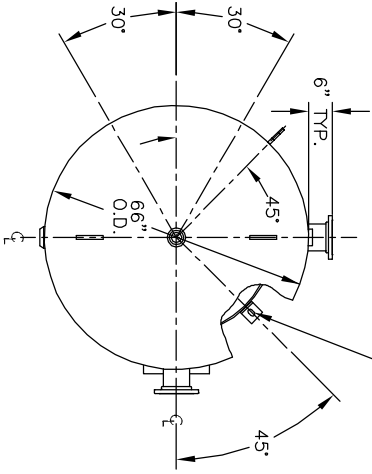
MANWAY DETAIL



NOZZLE DETAIL

NO. QTY	DESCRIPTION	SPEC	SUB-DWG.
S1 1			
S2 1			
H1 2			
C1 1	3"-NPT 3000# HALF COUPLING	SA-105	
F1 1	1"-NPT 1500# FLAT FLANGE	SA-181-70	
F2 1	1/4"-NPT 1500# FLAT FLANGE	SA-181-70	
F3 1	1"-NPT 1500# RADIAL FLANGE	SA-181-70	
F4 2	6" 150# ANSI RF SO. FLANGE	SA-105	
F4 2	6" SCH.80 PIPE X 7 1/2" LONG	SA-106-B	
F4 2	.134 X 6 5/8" I.D. X 8 5/8" O.D. BACKING RING	C1008	
F5 1	1 1/4"-NPT 1500# FLAT FLANGE	SA-181-70	
F6 1	1 1/4"-NPT 1500# RADIAL FLANGE	SA-181-70	
M1 1	12" X 16" X 3/4" X 4" 300# MANWAY	SA-106-C	
S3 1	STANDARD 8" SKIRT & CLIP ASSY. FOR 66" DIA.	A84526	
A1 4	3/4" X 5" X 5" STANDARD LIFT LUG	A84524	
NP 1	ASME DATA PLATE	C1010	

1 1/8" X 2"
(4) SLOTS EQ. SPACED
ON A 53" B.C.
REF.



ENG. DATE _____
O.C. DATE _____

REV	DATE	BY	APP	REV	NOTES
A		BAK	AMA		
B		WDS	JC		

BREAK ALL EXPOSED INTERIOR NOZZLE EDGES
ALL FLANGE BOLT HOLES TO STRADDLE VESSEL CENTERLINES

SPECIFICATIONS

O.D. 66	LGTH. 214	QAL. 3000	SA. 326.60
MAMP 137	PSI @ 400 F	WT. 5700	CUFT. 393.35
RT - MDMT	F@ PSI		
EXMT XRAY	TEST		
CRN ---			
WELD DETAILS: M-1932	CODE ASME SECT VIII, DIV 1		
STD. TOLERANCES (UNLESS OTHERWISE NOTED): M-2461	PER DATE OF DWG/LAST REV		

MANCHESTER
TANK
QAL. 3000

66" X 214" VERTICAL
STANDARD AIR RECEIVER

DRAWN BY	DATE	SCALE: NONE
APP. BY	DATE	DRAWING NO. 302454
g. Read		