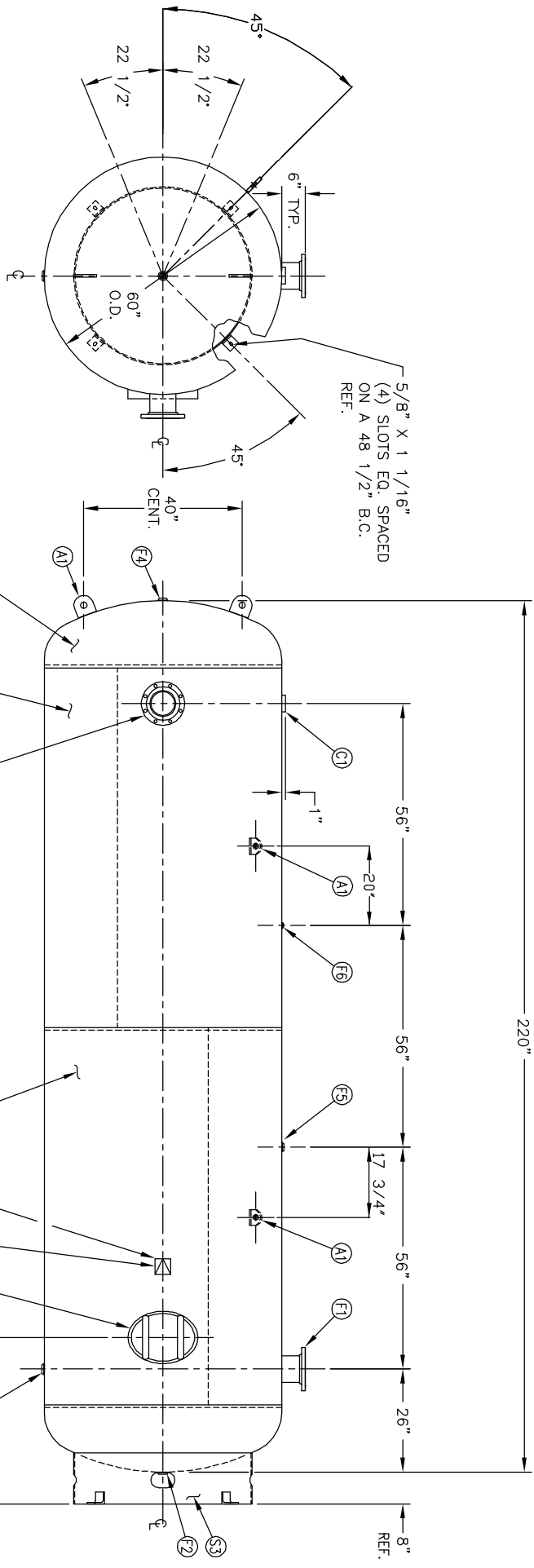


6" NOZZLE DETAIL

MANWAY DETAIL

NO. QTY.	DESCRIPTION	SPEC	SUB-DWG.
S1 1			
S2 1			
H1 2			
F1 2	6" 150# ANSI RF.SO. FLANGE	SA-105	
F1 2	6" SCH.120 PIPE X 7 1/2" LONG	SA-106-B	
F1 2	.134 X 8 5/8" O.D. X 6 5/8" I.D. BACKING RING	C1008/SA-36	
F2 1	1 1/4"-NPT 1500# FLAT FLANGE	SA-181-70	
F3 1	1 1/4"-NPT 1500# RADIAL FLANGE	SA-181-70	
F4 1	1"-NPT 1500# FLAT FLANGE	SA-181-70	
F5 1	1"-NPT 1500# RADIAL FLANGE	SA-181-70	
F6 1	1/4"-NPT 1500# FLAT FLANGE	SA-181-70	
C1 1	3"-NPT 3000# HALF COUPLING	SA-105	
M1 1	12" X 16" X 1" X 4" 300# MANWAY	SA-6/5-70/SA-106-C	
A1 4	3/4" X 5" X 5" STANDARD LIFT LUG	A84524	
S3 1	STANDARD 8" SKIRT & CLIP ASSY. FOR 60" DIA.	A85012	
NP 1	ASME DATA PLATE	C1010	



ENG. \_\_\_\_\_ DATE \_\_\_\_\_  
 Q.C. \_\_\_\_\_ DATE \_\_\_\_\_

REV.	DATE	BY	APP.	REVISION	NOTES	SPECIFICATIONS
1		AW	JR			O.D. 60 LGTH. 220 SH. HD. MANIP 200 PSI @ 400 F. HD. RT - MDMT -20 F @ PSI GAL. 2560 S.A. EXMT TEST WT. 5300# CU.FT. CORR ALW SH HD XRAY TEST CODE ASME SEC. VIII DIV. 1 CRN PER DATE OF DWG/LAST REV
2		JC				WELD DETAILS: M-1932 STD. TOLERANCES (UNLESS OTHERWISE NOTED): M-2461

**MANCHESTER**  
 TANK  
 Q:\3000

60" X 220" VERT.  
 STANDARD AIR RECEIVER

SCALE: NONE  
 DRAWING NO. 302453