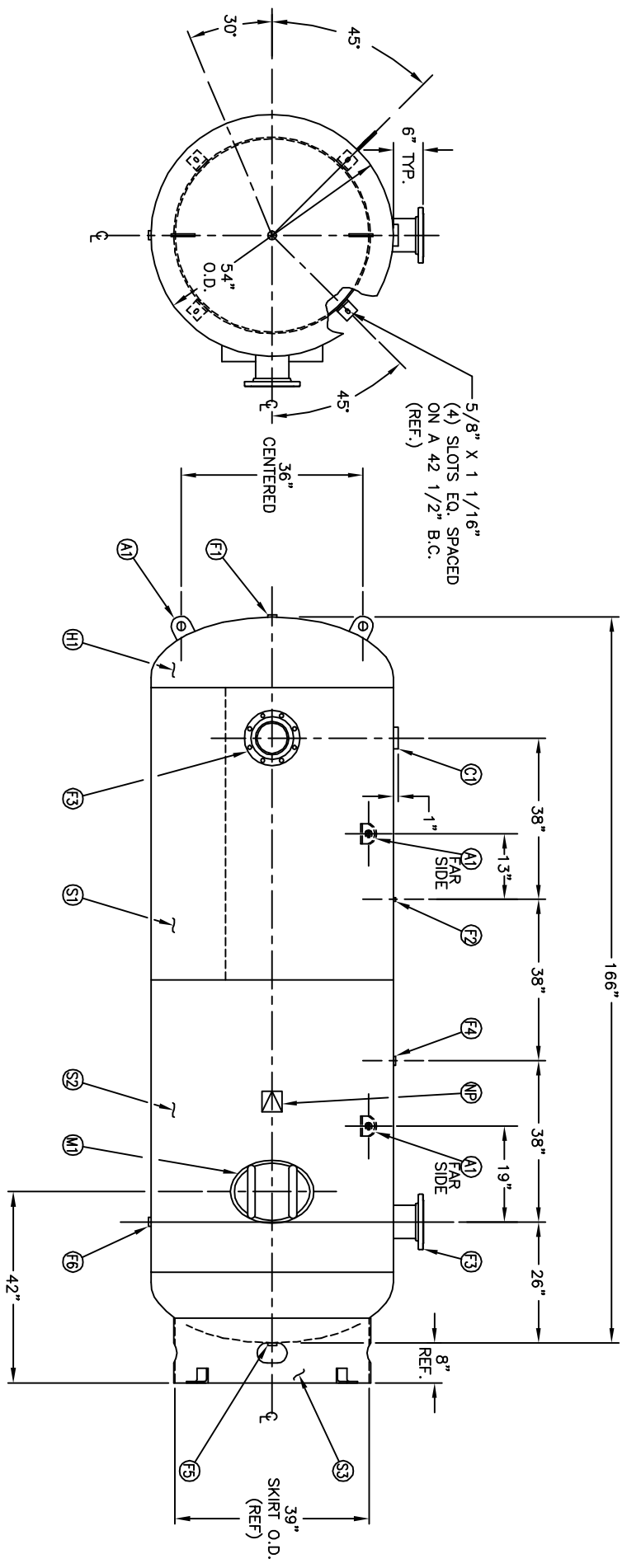


NOZZLE DETAIL

MANWAY DETAIL

NO. QTY	DESCRIPTION	SPEC	SUB-DWG.
S1 1			
S2 1			
H1 2			
C1 1	3"-NPT 3000# HALF COUPLING	SA-105	
F1 1	1"-NPT 1500# FLAT FLANGE	SA-181-70	
F2 1	1/4"-NPT 1500# FLAT FLANGE	SA-181-70	
F3 2	6" 150# ANSI RF. SO. FLANGE	SA-105	
F3 2	6" SCH.80 PIPE X 7 1/2" LONG	SA-106-C	
F4 1	1.34 X 8 5/8" O.D. X 6 5/8" I.D. BACKING RING	C1008/SA-36	
F5 1	1"-NPT 1500# RADIAL FLANGE	SA-181-70	
F6 1	1 1/4"-NPT 1500# FLAT FLANGE	SA-181-70	
F6 1	1 1/4"-NPT 1500# RADIAL FLANGE	SA-181-70	
M1 1	12" X 16" X 1" X 4" 300# MANWAY	SA-106-C	
A1 4	3/4" X 5" X 5" STANDARD LIFT LUG	AB4524	
S3 1	STANDARD 8" SKIRT & CLIP ASSY. FOR 54" DIA. TANK	AB5008	
NP 1	ASME DATA PLATE	C1010	



SMI DATE BY	9/26	APP	9/26
REVISION		NOTES	
<p>SPECIFICATIONS</p> <p>O.D. 54" LGTH. 166" SH. MAT'L</p> <p>MANP 165 PSI @ 400 F. HD. MAT'L</p> <p>RT - MDMT -20 F @ 165 PSI (CAL 1550 S.A. 207.90</p> <p>EXMT UG20(f) TEST WT. 2600# Q.U.T. 204.74</p> <p>XRAY CORR ALW SH HD</p> <p>CEN. PENDING CODE ASME SECT.VIII, DIV.1</p> <p>WELD DETAILS: M-1932 PER DATE OF DWG/LAST REV</p> <p>STD. TOLERANCES (UNLESS OTHERWISE NOTED): M-2461</p>			
<p>MANCHESTER TANK</p> <p>54" X 166" VERT. STANDARD AIR RECEIVER</p> <p>Q:\3000</p>		<p>DRAWN BY</p> <p>DATE</p>	<p>SCALE: NONE</p> <p>DRAWING NO. 302446</p>