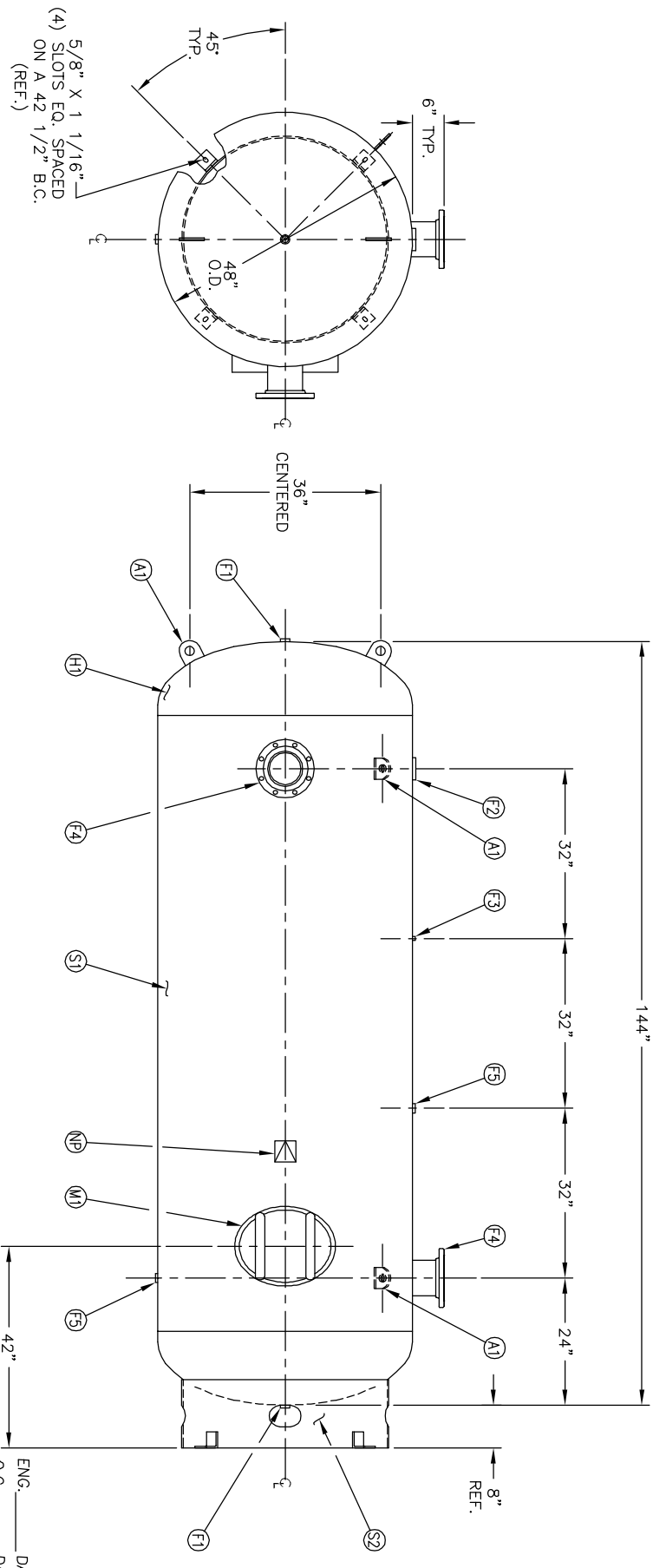


6" NOZZLE DETAIL

MANWAY DETAIL

NO. QTY	DESCRIPTION	SPEC	SUB-DWG.
S1 1			
H1 2			
F1 2	1 NPT 1500# FLAT FLANGE	SA-181-70	
F2 1	3 NPT 3000# HALF COUPLING	SA-105	
F3 1	1/4 NPT 1500# FLAT FLANGE	SA-181-70	
F4 2	6" 150# ANSI RF. SO. FLANGE	SA-105	
F4 2	6" SCH.120 PIPE X 7 1/2" LONG	SA-106-B	
F4 2	134 X 8 5/8" O.D. X 6 5/8" I.D. BACKING RING	C1008/SA-36	
F5 2	1 NPT 1500# RADIAL FLANGE	SA-181-70	
M1 1	12" X 16" X 1" X 4" 300# MANWAY	SA-106-C	
A1 4	1/2" X 4" X 4" STANDARD LIFT LUG		A85015
S2 1	STANDARD 8" SKIRT & CLIP ASSY. FOR 48" DIA. TANK		A85008
NP 1	ASME DATA PLATE	C1010	



(4) 5/8" X 1 1/16" SLOTS EQ. SPACED ON A 42" B.C. (REF.)

ENG. \_\_\_\_\_ DATE \_\_\_\_\_  
 Q.C. \_\_\_\_\_ DATE \_\_\_\_\_

REV	DATE	BY	REVISION	APP	DATE	REV	NOTES	SPECIFICATIONS
1		AW		JR				O.D. 48 LGH. 144 SH. HD. MAMP 200 PSI @ 400 F RT - MDMT -20 F @ 200 PSI EXMT UG20(f) TEST CRN - - - WELD DETAILS: M-1932 STD. TOLERANCES (UNLESS OTHERWISE NOTED): M-2461
2		BAK		JC				
3		JC						



48" X 144" VERT. STANDARD AIR RECEIVER  
 Q:\3000

DRAWN BY: *g. Stead* DATE: \_\_\_\_\_ SCALE: NONE  
 APP. BY: *g. Stead* DATE: \_\_\_\_\_ DRAWING NO: 302444