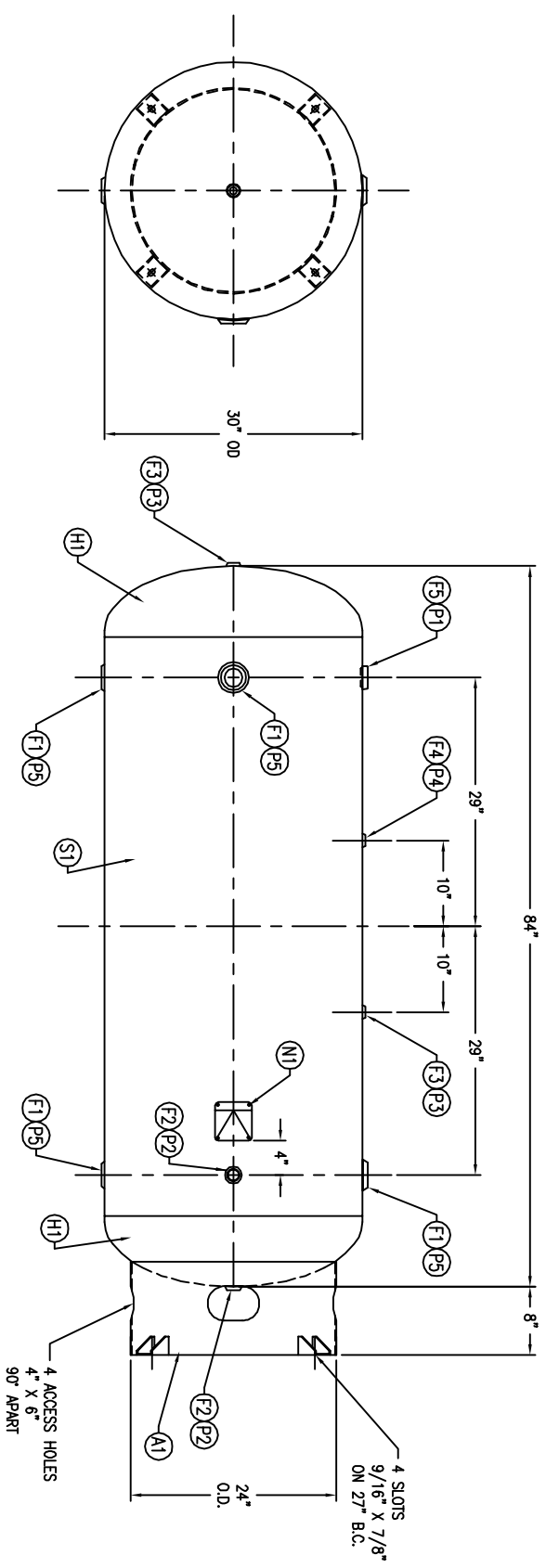


CODE/ADDENDA _____ APPROVED _____
 RELEASED FOR PRODUCTION _____
 Q.C. _____ DATE _____

FIND NO.	NPT SIZE
F1	2
F2	1
F3	1/2
F4	1/4
F5	1-1/2



NO.	QTY	PART NO.	DESCRIPTION
H1	2		HEAD: SA-414-G
S1	1		SHELL: SA-414-G
F1	4		FLANGE: 2 NPT RAD. SA181-70
F2	2		FLANGE: 1 NPT SA181-70
F3	2		FLANGE: 1/2 NPT SA181-70
F4	1		FLANGE: 1/4 NPT SA181-70
F5	1		FLANGE: 1-1/2 NPT RAD SA181-70
A1	1	A85002	BASING ASSY FOR 30" TANK AP.G
N1	1		NAME PLATE: ASME / NB AP.G

SM	DATE	BY	REVISION	APP
A		EGB		TA
1		SN		LB
2		JC		JC
3		JC		JC

NOTES

SPECIFICATIONS

O.D. 30 LGTH. 84 SH. HD.
 MAMP 200 PSI @ 400 F.
 RT- MDMT °F PSI GAL. 240 S.A. 59
 EXMT TEST WT. 670# CUFT. 32.16
 CRN --- CORR ALW SH HD
 WELD DETAILS: M-1932 PER DATE OF DWG/LST REV
 STD. TOLERANCES (UNLESS OTHERWISE NOTED): M-2461



VERTICAL AIR RECEIVER
 240 GALLON

DRAWN BY	DATE	SCALE: NONE
LB		
APP. BY	DATE	DRAWING NO.
AS		302428

Q:\3000\