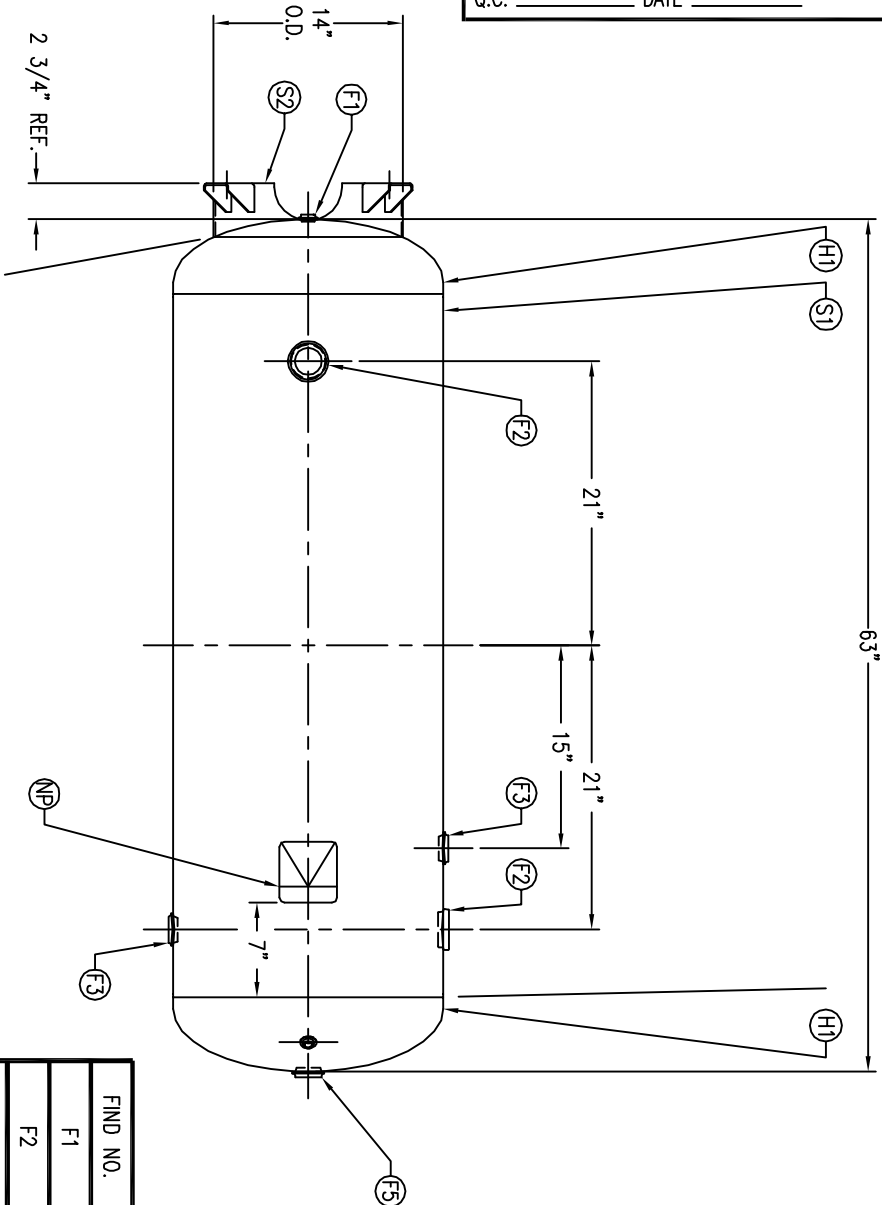
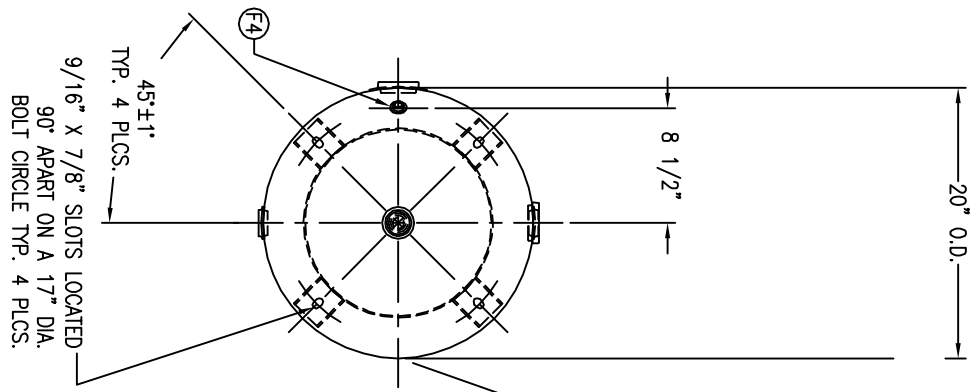


CODE/ADDENDA APPROVED JR  
 RELEASED FOR PRODUCTION  
 Q.C. \_\_\_\_\_ DATE \_\_\_\_\_



FIND NO.	NPT SIZE
F1	1/2
F2	2
F3	1-1/4
F4	1/4
F5	1-1/4



SYMBOL	DATE	BY	REVISION	APP	XREF	REV.	NOTES
A		EGB			C1005	A	
B		TA			C1007	A	



**VERTICAL AIR RECEIVER**

O.D. 20 LGTH. 63 SH. MAT'L  
 MAMP 200 PSI @ 690 F HD. MAT'L  
 RT- MDMT T@ PSI  
 EXMT TEST W WT. 198# SH HD  
 XRAY CORR ALW CODE: ASME SEC. VIII DIV. I, LATEST EDITION & ADDENDA  
 CRN F0516.1C  
 WELD DETAILS: M-1932  
 STD. TOLERANCES (UNLESS OTHERWISE NOTED): M-2461

DRAWN BY	DATE	SCALE	NDME
EGB			
APP. BY	DATE	DRAWING NO.	
JR		302414	