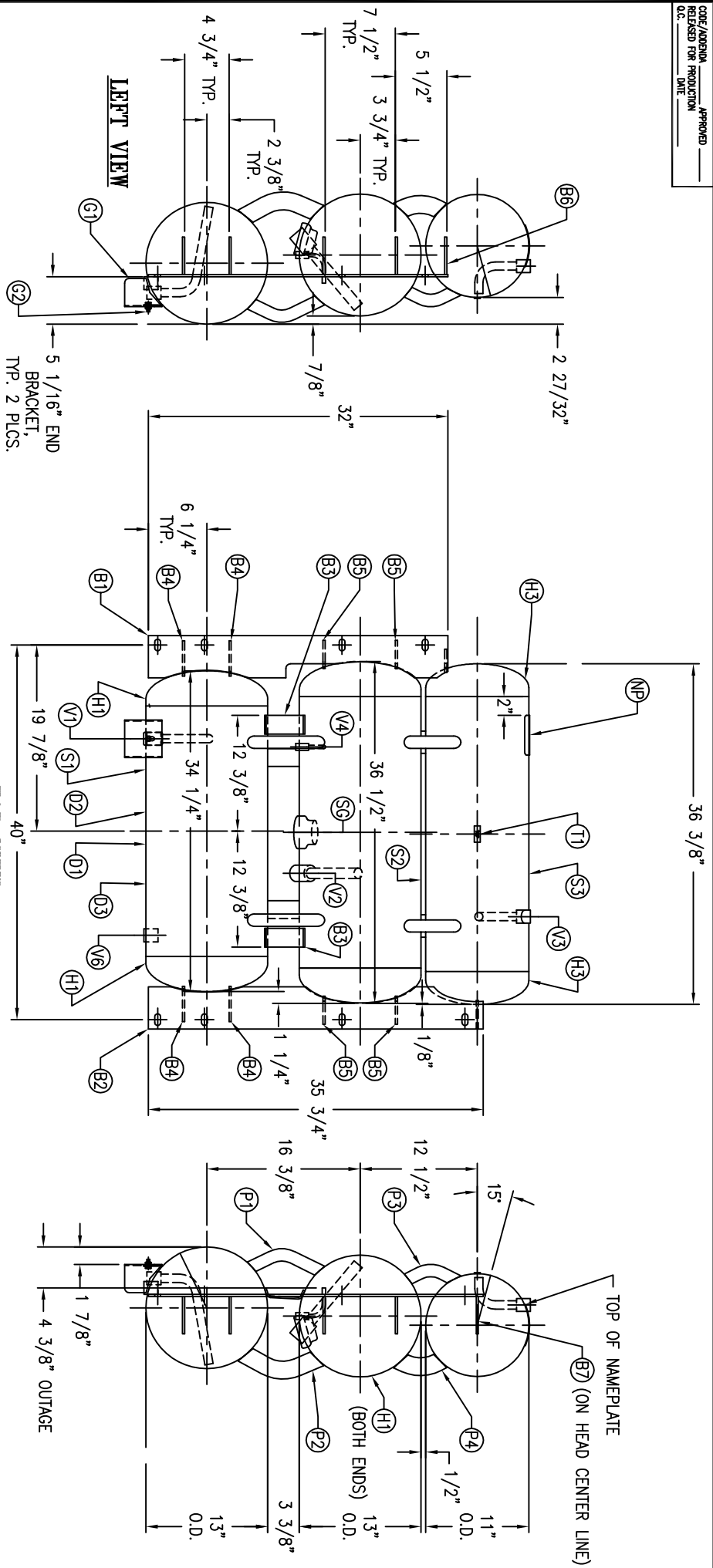


CODE/ISSUE/REV. APPROVED  
 RELEASED FOR PRODUCTION  
 DATE



SYMBOL	DATE	BY	REVISION	APP	NOTES
A		BAK		AMA	1. TANK CENTER LINES MUST BE PARALLEL WITH EACH OTHER WITHIN .25" ALONG O.L. OF TANK.
B		JC		JC	2. BRACKETS 'B1' & 'B2' DO NOT WELD TO HEADS. 3. HOLD GUARD CLIP G1 2" UP FROM CENTRE OF PUG.

SPECIFICATION	
O.D. 13.13.1116TH. 34.37.36	SH.
MAMP 312 PSI @ 650 °F	HD.
RT- MDMT -20 °F @ 312 PSI	GAL. 50.25
CRN M4538.534678907M45249.2	WT. 230#
	CORR ALW
	SH
	HD
WELD DETAILS: M-1932	PER DATE OF DWG/FAST REV
STD. TOLERANCES (UNLESS OTHERWISE NOTED): M-2461	

**MANCHESTER**

**MOTORFUEL TANK**

Q:\2000\

DRAWN BY: JR	DATE	SCALE: NONE
APPR. BY: AMA	DATE	DWG NO. 270157