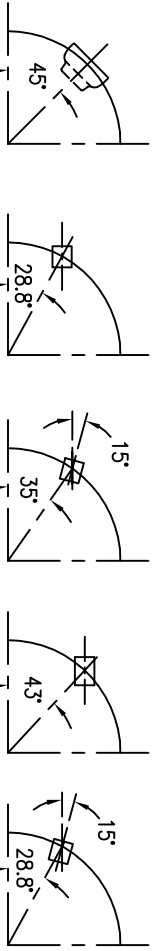
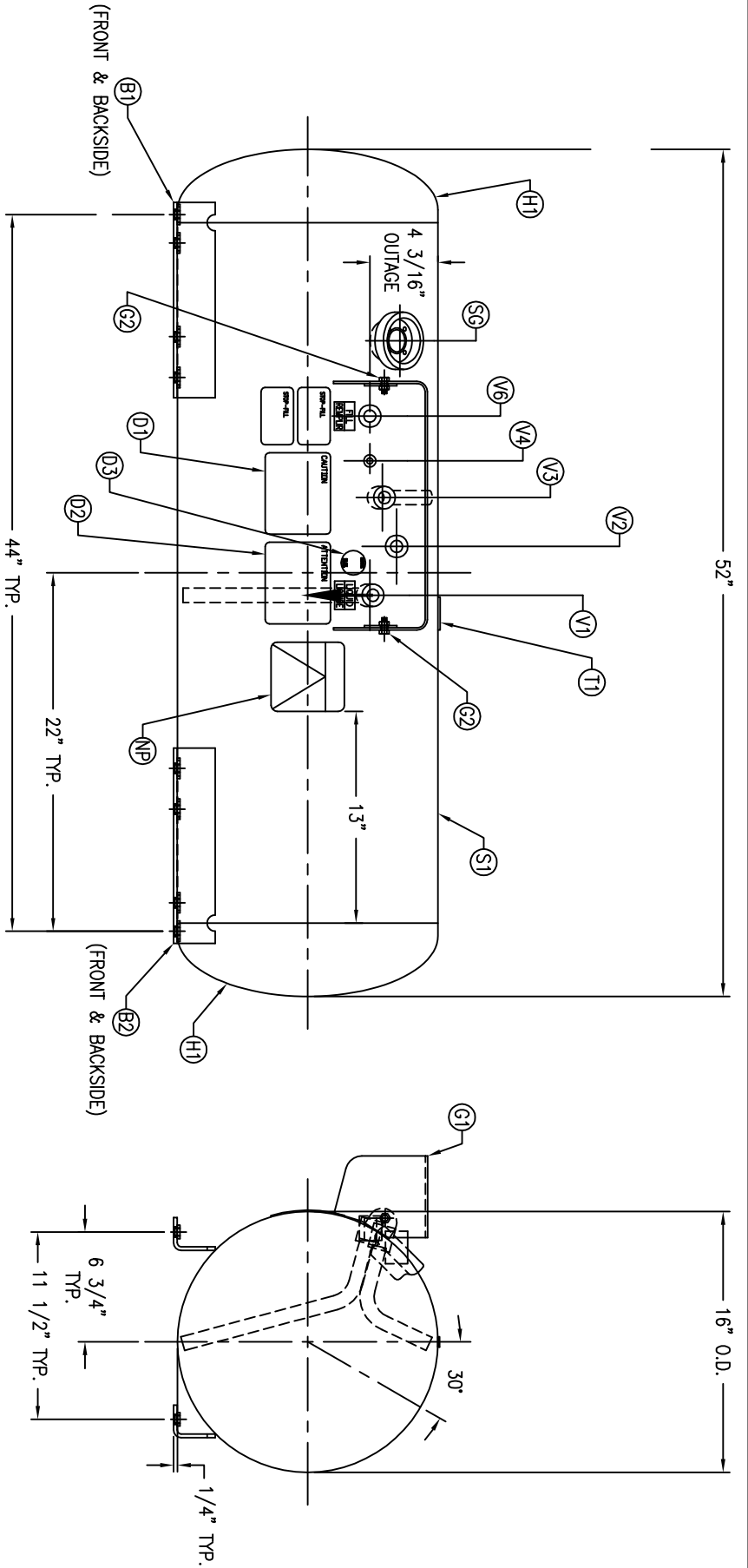


CODE/ADDENDA 2013 APPROVED DP
 RELEASED FOR PRODUCTION
 Q.C. _____ DATE _____



S.G. ADAPT. FILL V6 & VAPOR V3 RELIEF V2 LIQUID V1
 OUTAGE V4 CPLINGS. CPLING. CPLING. CPLING.

SYMB	DATE	BY	REVISION	NOTES
D		DP		
E		DP		
F		DP		

SPECIFICATIONS	
O.D. 16	LGTH-52
MAMP 312	PSI @ 650 °F
RT- MDMT -20 °F @ 312 PSI	TEST PSI
EXMT XRAY	W
CRN	
SH. HD.	SA 19.0
GAL. 41.4	WT. 152#
CORR ALW	CU.FT. 5.5
CODE ASME UM-11(9)(5)(b)	SH HD
PER DATE OF DWG/FAST REV	

MANCHESTER
 TANK
 INTERRATNPO01 \ DWG \ 2000

MOTORFUEL TANK

SCALE: NONE
 DWG NO. 20067

DRAWN BY: DQ DATE: _____
 APPR. BY: RM DATE: _____

WELD DETAILS: M-1932
 STD. TOLERANCES (UNLESS OTHERWISE NOTED): M-2461