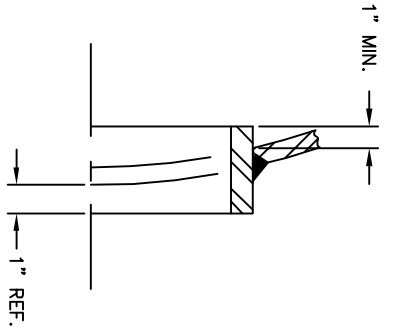
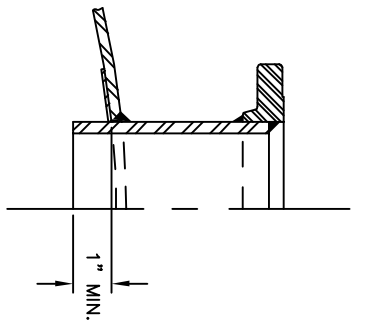


CODE/ADDENDA APPROVED
 RELEASED FOR PRODUCTION DATE

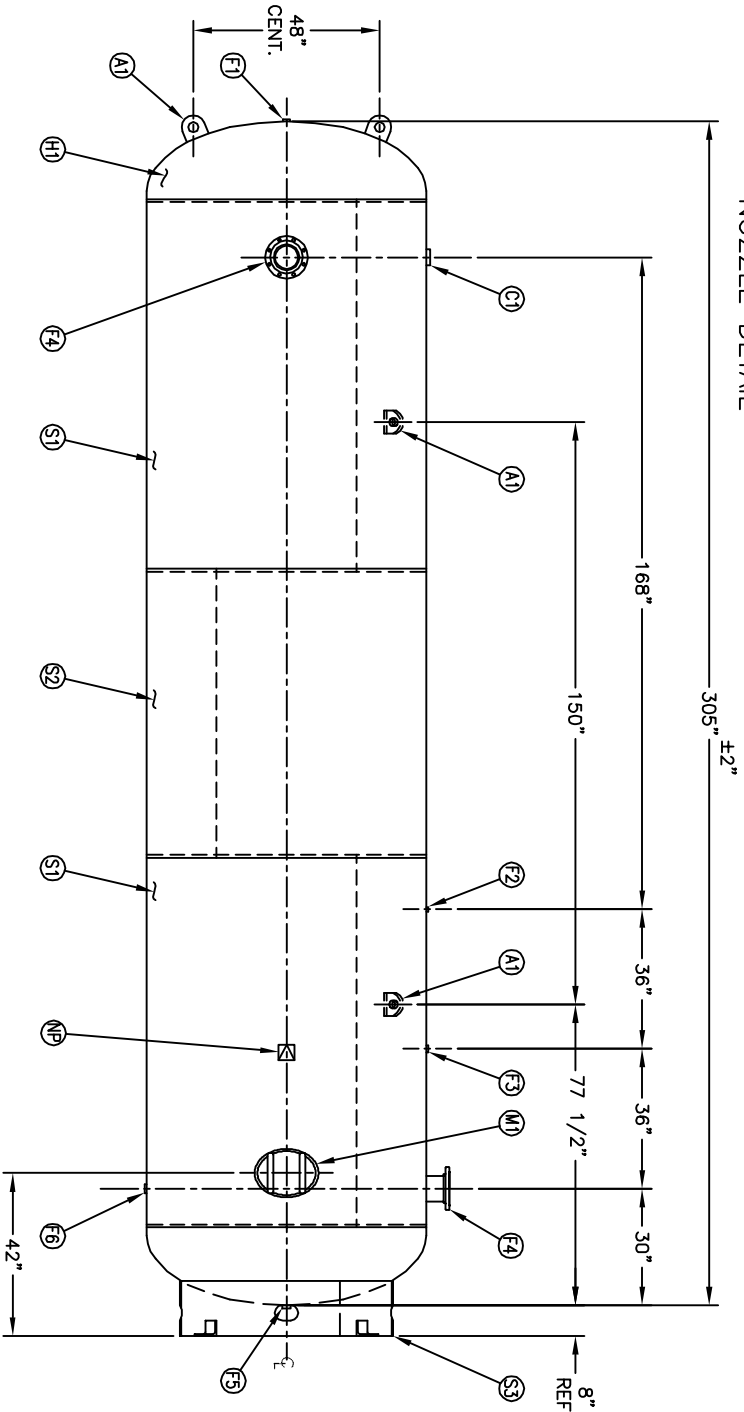
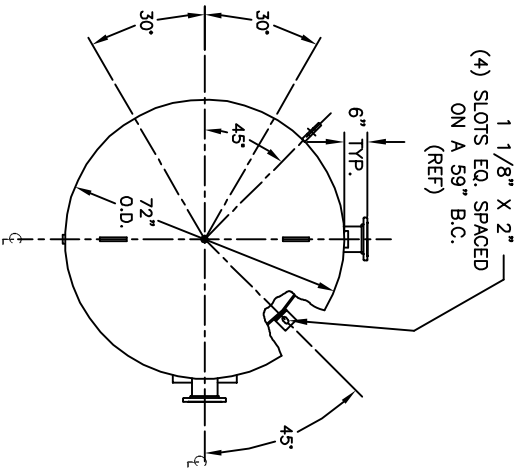


MANWAY DETAIL



NOZZLE DETAIL

NO. QTY	DESCRIPTION	SPEC	SUB-DWG.
S1 2			
S2 1			
H1 2			
C1 1	3"-NPT 3000# HALF COUPLING	SA-105	
F1 1	1"-NPT 1500# FLAT FLANGE	SA-181-70	
F2 1	1/4"-NPT 1500# FLAT FLANGE	SA-181-70	
F3 1	1"-NPT 1500# RADIAL FLANGE	SA-181-70	
F4 2	6" 150# ANSI RF SO. FLANGE	SA-105	
F4 2	6" SCH. 80 PIPE X 7 1/2" LONG	SA-106-B	
F5 2	134 X 8 5/8" O.D. X 6 5/8" I.D. BACKING RING	C1008	
F5 1	1 1/4"-NPT 1500# FLAT FLANGE	SA-181-70	
F6 1	1 1/4"-NPT 1500# RADIAL FLANGE	SA-181-70	
M1 1	12" X 16" X 3/4" X 4" 300# MANWAY	SA-675-70	
A1 4	1" X 6" X 6" STANDARD LIFT LUG		
S3 1	STANDARD 8" SKIRT & CLIP ASSY. FOR 72" DIA. TANK		
NP 1	ASME DATA PLATE	C1010	



NOTES

SPECIFICATIONS

SM/D	DATE	BY	REVISION	APP	DATE
A		BAK		AMA	
B		BS			

O.D. 72	LGTH. 305	QUL. 5000	SA. S01
MAWP 165 PSI @ 400 F			
RT- MDMT -20 F @ 165 PSI			
EXMT XRAY TEST	PSI	CORR ALW	SH HD
CRN ---		CODE ASME SECT VIII, DIV 1	
WELD DETAILS: M-1932	PER DATE OF DWG/LAST REV		
STD. TOLERANCES (UNLESS OTHERWISE NOTED): M-2461			

DRAWN BY	DATE	SCALE:	NONE
APP. BY	DATE	DRAWING NO.	305663

MANCHESTER
 TANKS
 Q:\3000

72" X 305" VERTICAL
 STANDARD AIR RECEIVER