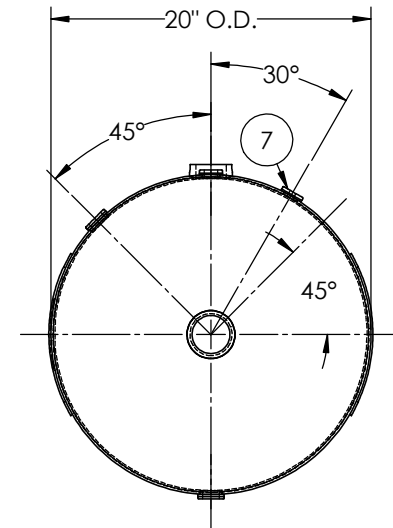
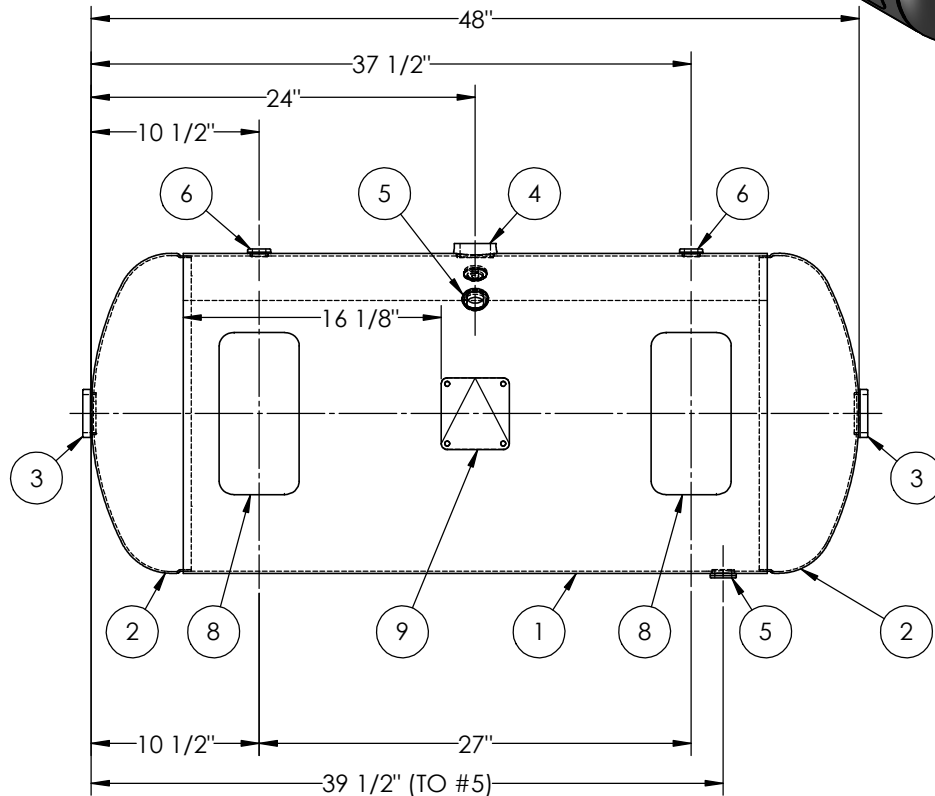


ITEM NO.	PART NO.	DESCRIPTION	QTY.
1	305439-SL	SHELL LAYOUT FOR 20" TANK	1
2	H32021	.124 MIN. 20" O.D. 2:1 ELLIP. JOG. HEAD	2
3	F30316	2"-NPT FLAT FLANGE O-RING	2
4	F30317	1 1/2"-NPT RADIAL FLANGE O-RING	1
5	F31840	3/4"-NPT FLAT FLANGE	2
6	F10250	1/2"-NPT FLAT FLANGE	2
7	F33310	1/8"-NPT FLAT FLANGE	1
8	A99436	10GA PAD	4
9	A20910	ASME DATA PLATE	1
10	A98368	LEG ASY	2



SHEET 1 OF 2

NOTES:

RELEASED FOR PRODUCTION
Q.C. _____ DATE _____

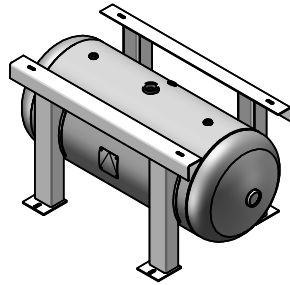
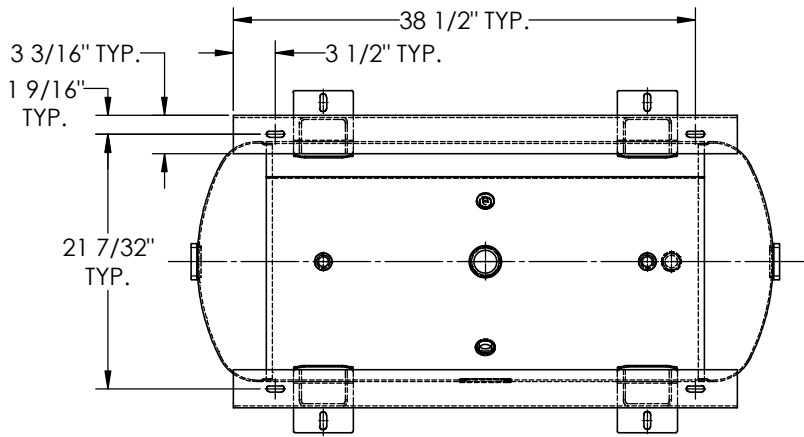
SPECIFICATIONS	
O.D. 20 LGTH. 48	MAWP 200 PSI @ 400°F
WT. 228 LBS.	
S.A. 22.2 SQ.FT.	
GAL. 60 CU.FT.7.9 CRN: F0516.1C	
CODE: ASME Section VIII, Div.1, LATEST EDITION	W
STD. TOLERANCES: M-2461 (UNLESS OTHERWISE NOTED)	EXMT UG-20(f) CORR ALW 0 SH 0 HD
	WELD DETAILS: M-1932

MANCHESTER TANK

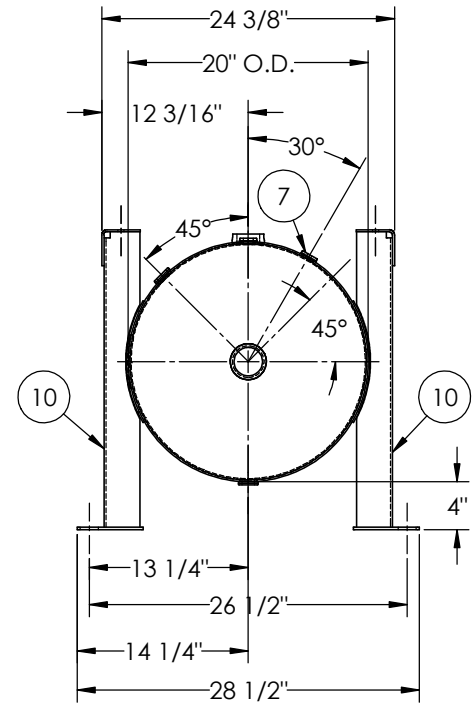
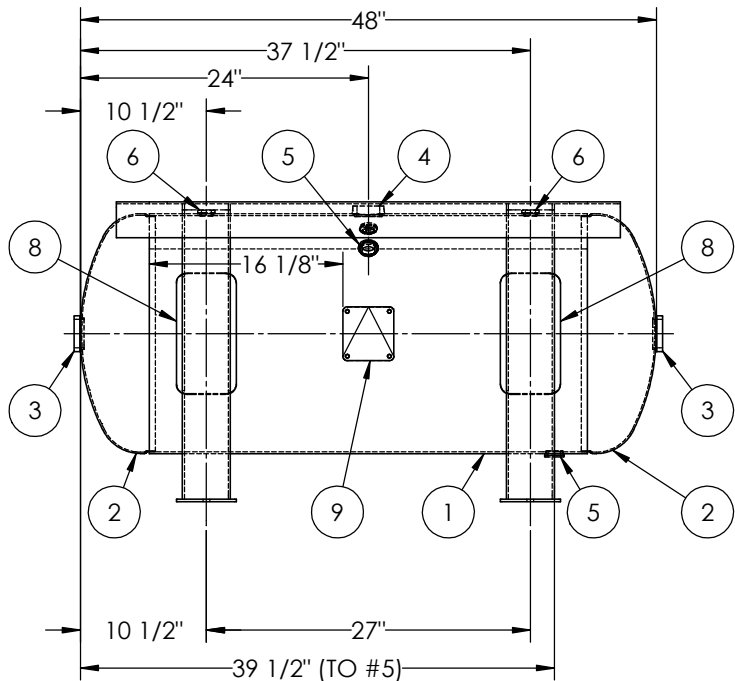
HORIZONTAL AIR RECEIVER

DRAWN BY: JR	DATE:
APPR. BY: JR	DATE:
SCALE: NONE	DRWG NO. 305439

REVISIONS			
REV.	BY	DESCRIPTION	DATE
A	BC		
B	RK		



ITEM NO.	PART NO.	DESCRIPTION	QTY.
1	305439-SL	SHELL LAYOUT FOR 20" TANK	1
2	H32021	.124 MIN. 20" O.D. 2:1 ELLIP. JOG. HEAD	2
3	F30316	2"-NPT FLAT FLANGE O-RING	2
4	F30317	1 1/2"-NPT RADIAL FLANGE O-RING	1
5	F31840	3/4"-NPT FLAT FLANGE	2
6	F10250	1/2"-NPT FLAT FLANGE	2
7	F33310	1/8"-NPT FLAT FLANGE	1
8	A99436	10GA PAD	4
9	A20910	ASME DATA PLATE	1
10	A98368	LEG ASY	2



SHEET 2 OF 2

NOTES:

RELEASED FOR PRODUCTION
Q.C. _____ DATE _____

SPECIFICATIONS	
O.D. 20 LGTH. 48 WT. 228 LBS. S.A. 22.2 SQ.FT. GAL. 60 CU.FT.7.9 CODE: ASME Section VIII, Div.1, LATEST EDITION STD. TOLERANCES: M-2461 (UNLESS OTHERWISE NOTED)	MAWP 200 PSI @ 400°F W EXMT UG-20(f) CORR ALW 0 SH 0 HD WELD DETAILS: M-1932

MANCHESTER TANK

HORIZONTAL AIR RECEIVER

DRAWN BY: JR	DATE:
APPR. BY: JR	DATE:
SCALE: NONE	DRWG NO. 305439

REVISIONS			
REV.	BY	DESCRIPTION	DATE
A	BC		
B	RK		