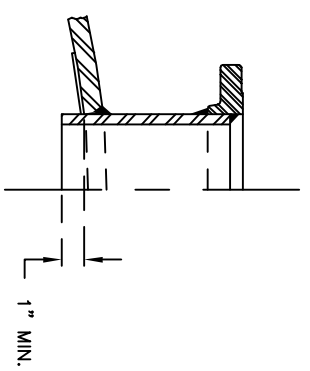
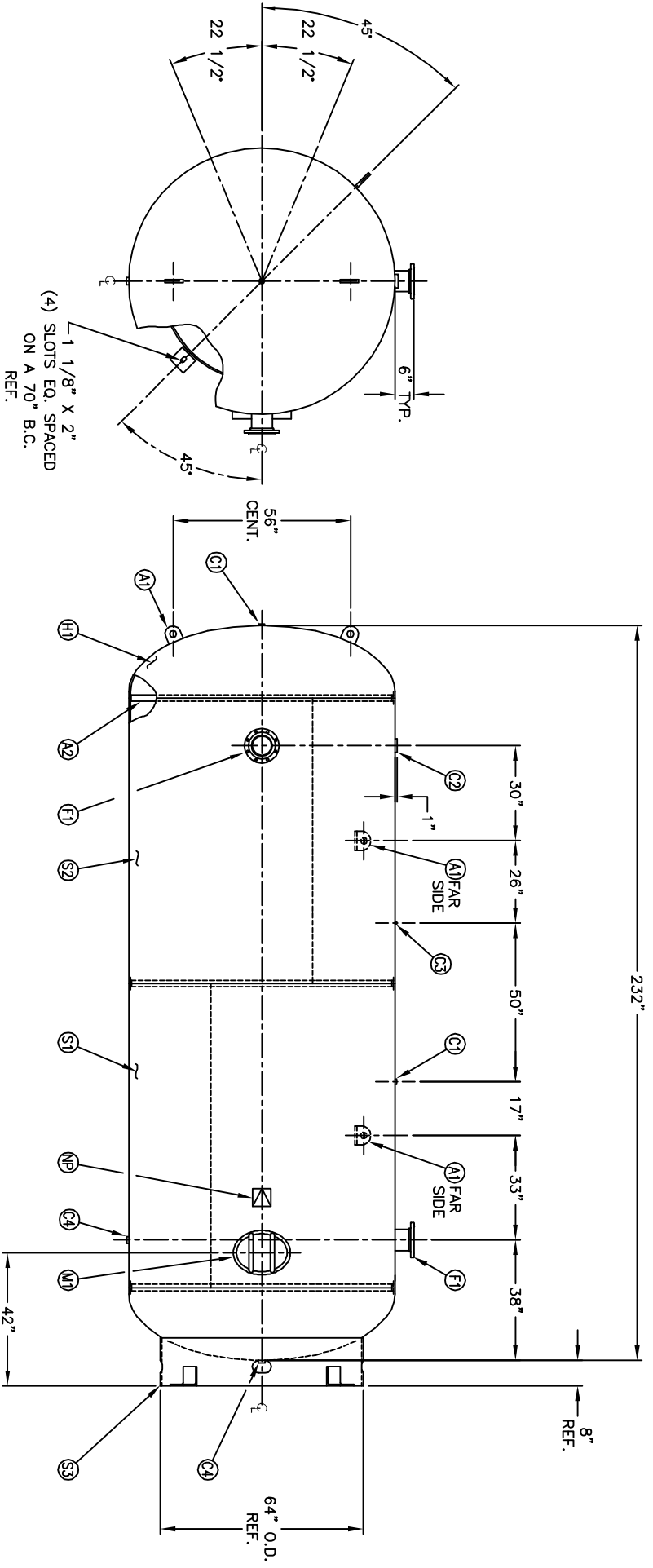


MANWAY DETAIL



6" NOZZLE DETAIL

NO. QTY	DESCRIPTION	SPEC	SUB-DWG.
S1 1			
S2 1			
H1 2	.489 MIN. 84" O.D. 2:1 ELLIP. HEAD 2" S.F.	SA-516-70	
C1 2	1"-NPT 3000# FULL COUPLING	SA-105	
C2 1	3"-NPT 3000# HALF COUPLING	SA-105	
C3 1	1/4"-NPT 3000# FULL COUPLING	SA-105	
C4 2	1 1/4"-NPT 3000# HALF COUPLING	SA-105	
F1 2	6" 300# ANSI RF. SO. FLANGE	SA-105	
F1 2	6" S/XXH PIPE X 7 1/2" LONG	SA-106-B	
F1 2	.134 X 8 5/8" O.D. X 6 5/8" I.D. BACKING RING	C1008	
M1 1	12" X 16" X 1" X 6" 300# MANWAY	SA-106-C	
S3 1	STANDARD 8" SKIRT ASSEMBLY FOR 84" DIA. TANK		
A1 4	1" X 6" X 6" STANDARD LIFT LUG		
A2 3	3/16" X 2" X 260 3/16" BACKING RING	C1010	
NP 1	ASME DATA PLATE	C1010	



SM/DATE	BY	REVISION	APP	DATE	REV.
A	JC		JC		

NOTES  
 ALL FLANGE BOLT HOLES TO STRADDLE CENTER LINES  
 BREAK ALL EXPOSED INTERIOR NOZZLE EDGES

SPECIFICATIONS

O.D. 84 LGTH. 232 SH. HD.  
 MWP 200 PSI @ 450 F. CAL. 5000 S.A. 455.01  
 RT- MDMT -20 F @ 200 PSI WT. 10800 CU.FT. 683.69  
 EXMT TEST CORR ALW SH HD  
 CRN N/A CODE ASME SECT.VIII, DIV.1  
 WELD DETAILS: M-1932 PER DATE OF DWG/LAST REV  
 STD. TOLERANCES (UNLESS OTHERWISE NOTED): M-2461



84" X 232" VERT.  
 STANDARD AIR RECEIVER  
 Q:\3000

DRAWN BY	DATE	SCALE
J. Stand		NONE
APP. BY	DATE	DRAWING NO.
J. Stand		304718