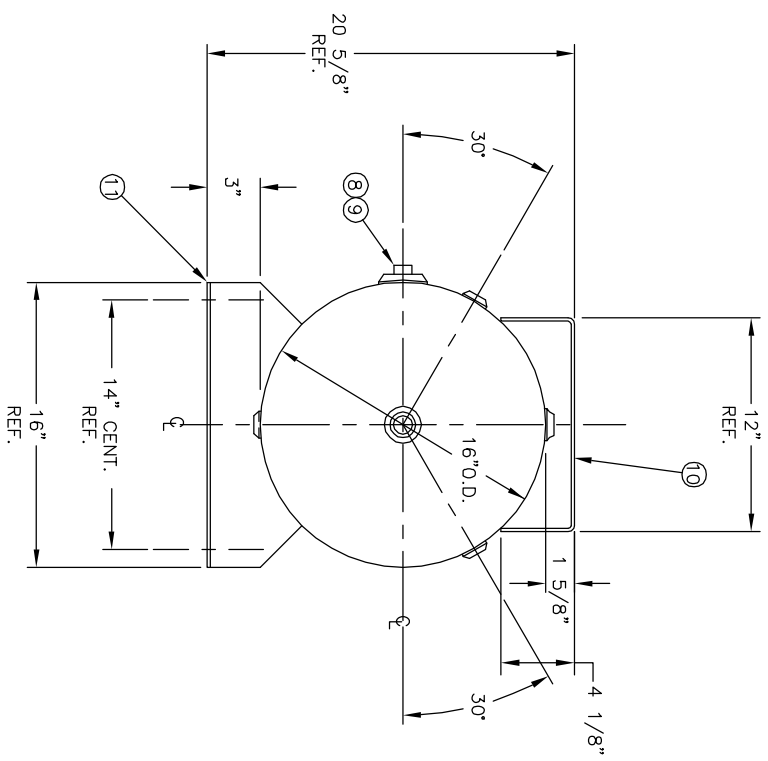
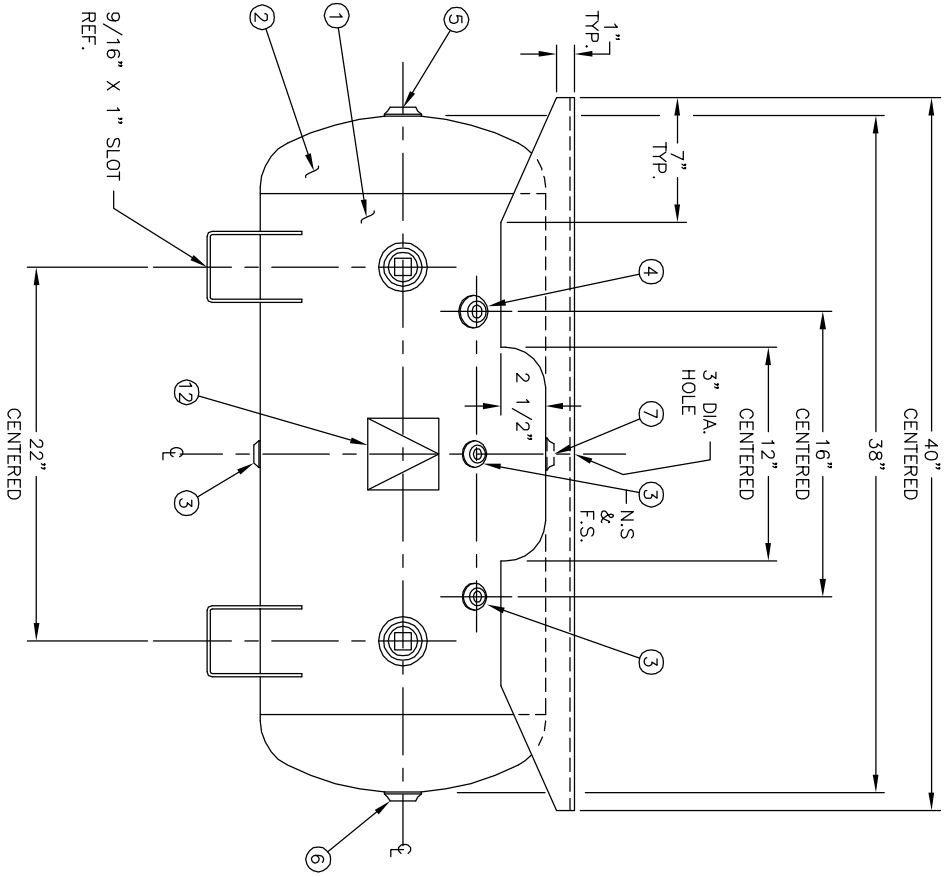


CODE/ADDENDA 2010/2011A APPROVED  
 RELEASED FOR PRODUCTION  
 Q.C. \_\_\_\_\_ DATE \_\_\_\_\_



NO. QTY	DESCRIPTION	SPEC	SUB-DWG.
1	1		
2	2		
3	4 1/4" NPT 1500# FLAT FLANGE	SA-181-70	
4	1 3/8" NPT 1500# FLAT FLANGE	SA-181-70	
5	1 1/2" NPT 1500# FLAT FLANGE	SA-181-70	
6	1 3/4" NPT 1500# FLAT FLANGE	SA-181-70	
7	1 3/4" NPT 1500# RADIAL FLANGE	SA-181-70	
8	2 1 1/2" NPT 1500# RADIAL FLANGE	SA-181-70	
9	2 1 1/2" NPS PLUG		
10	1 3/16" X 19 1/2" X 40" PLATFORM		
11	2 STANDARD SADDLE FOR 16" O.D. TANK		
12	1 ASME DATA PLATE	C1010	

SW	DATE	BY	REVISION	APP	NOTES	SPECIFICATIONS
33				33		



30 GALLON  
 STD. HORIZ. W/EXTENDED PLATFORM

Q.D. 16 LGH. 38  
 MAMP 200 PSI @ 650 F  
 RT - MDMT -20 F @ 200 PSI  
 EXMT TEST PSI SH CUT. 4.0  
 CORR ALW  
 CER. F2151.1C  
 WELD DETAILS: M-1932  
 STD. TOLERANCES (UNLESS OTHERWISE NOTED): M-2461

SCALE: NONE  
 DRAWING NO. 302686