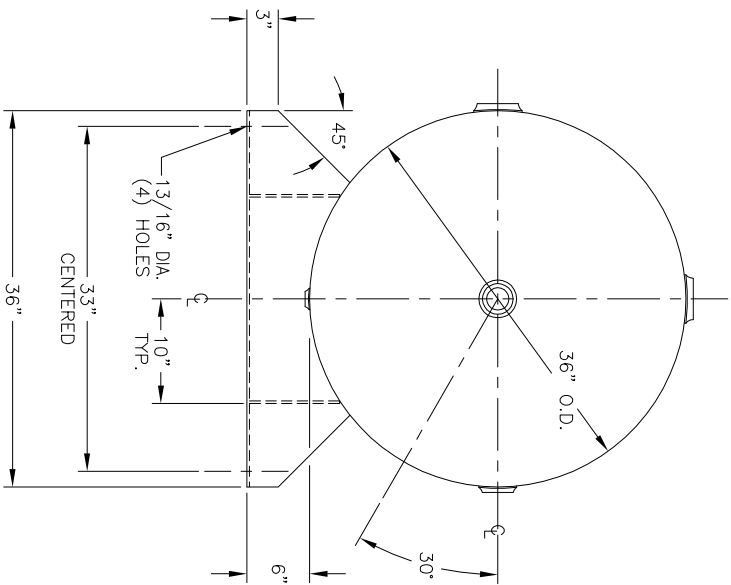
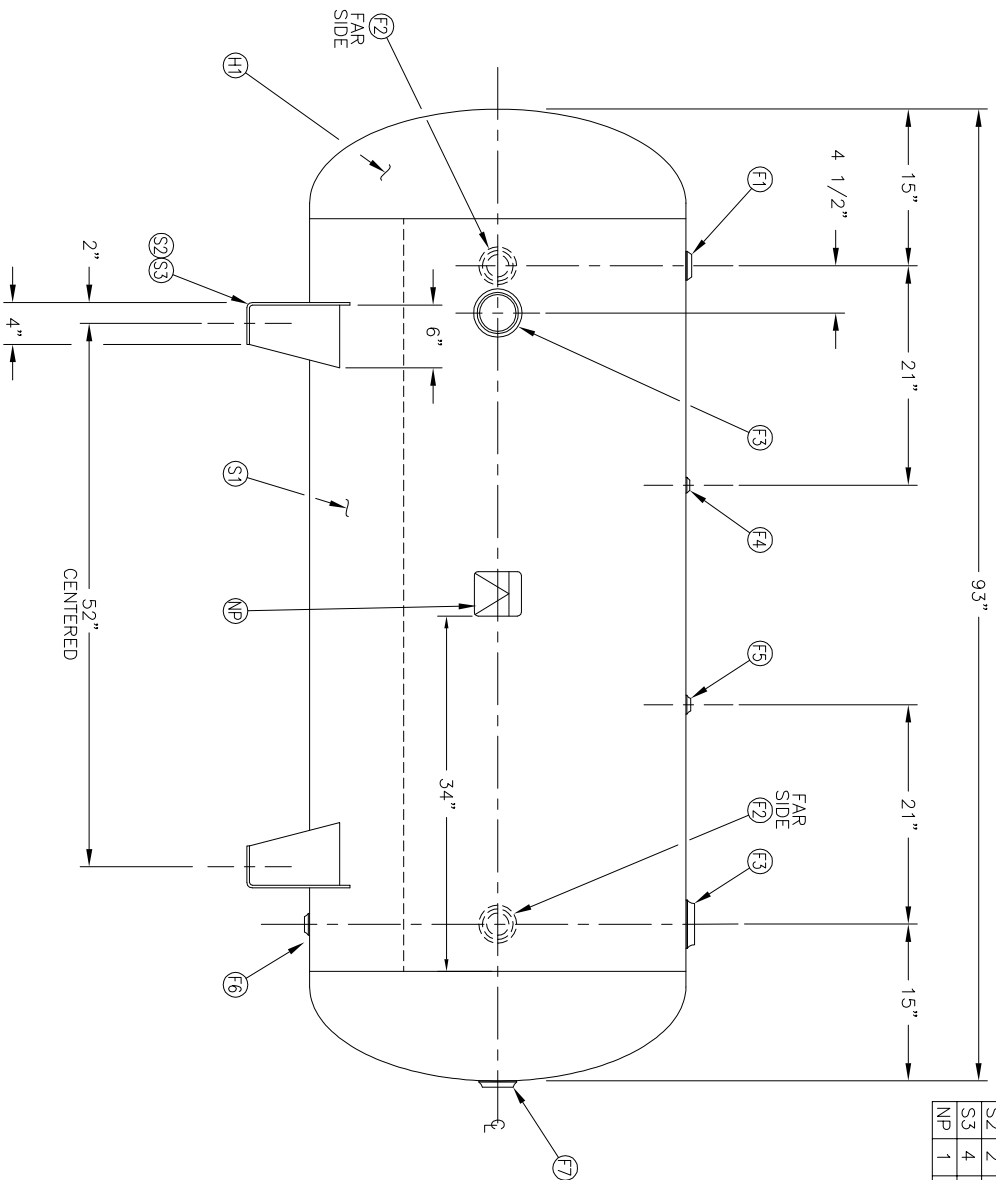


NO. QTY	DESCRIPTION	SPEC	SUB-DWG.
S1 1			
H1 2			
F1 1	1.1/2 NPT 1500# RADIAL FLANGE	SA-181-70	
F2 2	2 NPT 1500# RADIAL FLANGE	SA-181-70	
F3 2	3 NPT 1500# RADIAL FLANGE	SA-181-70	
F4 1	1/4 NPT 1500# FLAT FLANGE	SA-181-70	
F5 1	1/2 NPT 1500# FLAT FLANGE	SA-181-70	
F6 1	3/4 NPT 1500# RADIAL FLANGE	SA-181-70	
F7 1	2 NPT 1500# FLAT FLANGE	SA-181-70	
S2 2	1/4" X 13 1/2" X 36" SADDLE	C1008	
S3 4	3/16" X 6" X 8 5/8" GUSSET	C1010	
NP 1	ASME DATA PLATE	C1010	



DATE	BY	REVISION	APP	REF	REV	NOTES	SPECIFICATIONS
							O.D. 36 LGH. 93 MAMP 200 PSI @ 450 F CRN. L8908.5C WELD DETAILS: M-1932 STD. TOLERANCES (UNLESS OTHERWISE NOTED): M-2461 GAL. 400 WT. 925# CODE ASME SECT. VIII, DIV. 1 PER DATE OF DWG/LAST REV



36" X 93"  
STANDARD AIR RECEIVER

DATE	BY	SCALE	DRAWING NO.
		NONE	302488