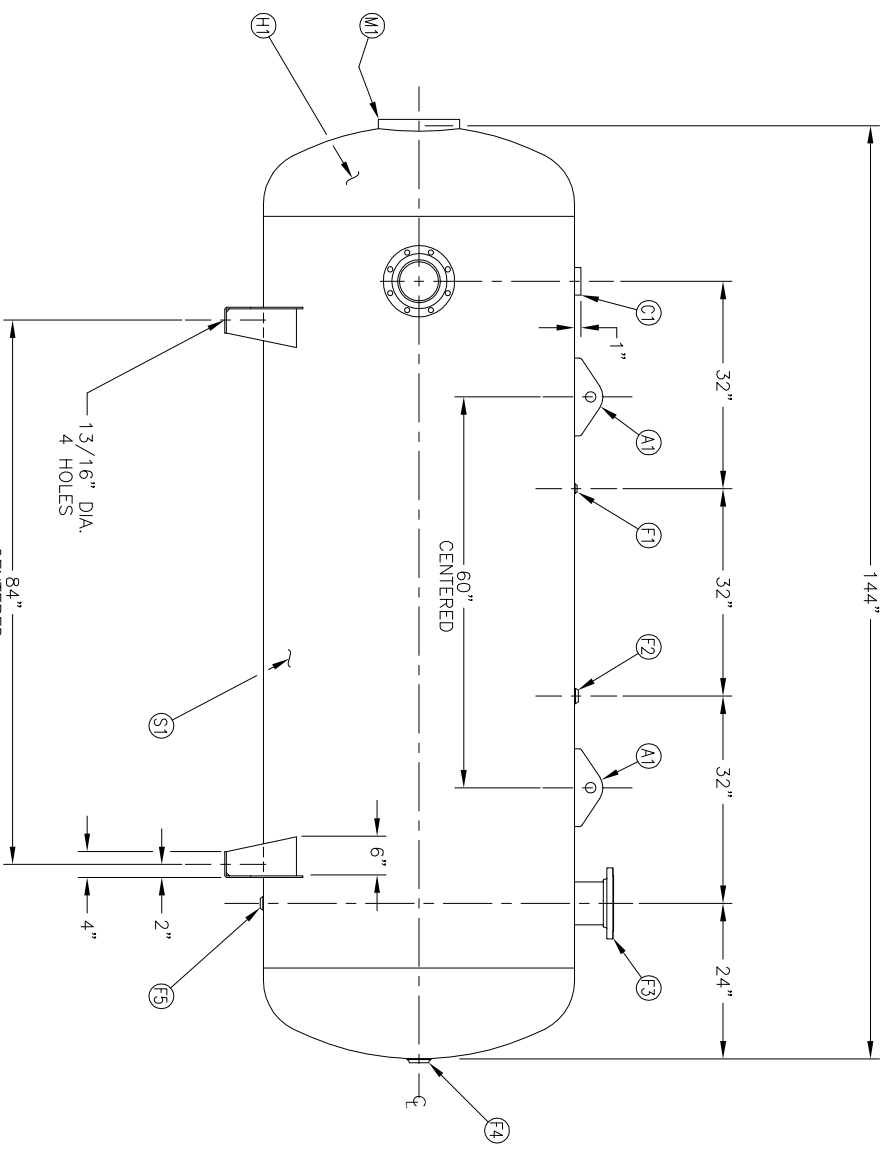
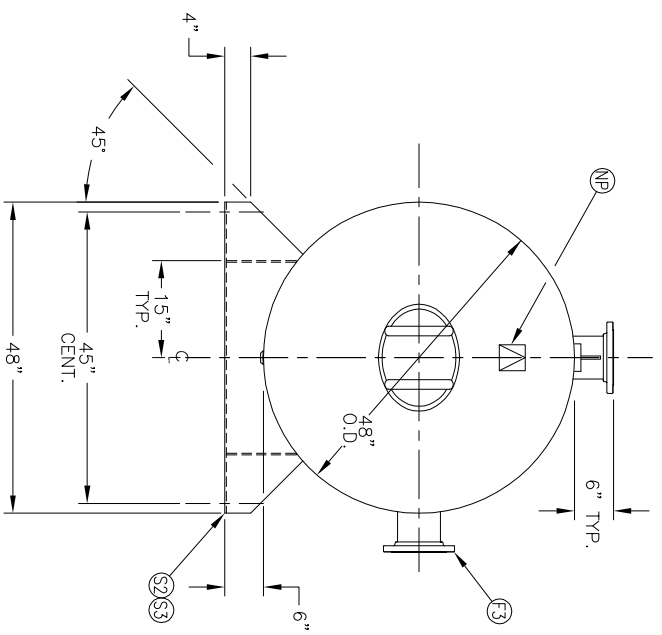


NO. QTY	DESCRIPTION	SPEC	SUB-DWG.
S1 1			
H1 2			
C1 1	3"-NPT 3000# HALF COUPLING	SA-105	
F1 1	1/4"-NPT 1500# FLAT FLANGE	SA-181-70	
F2 1	1"-NPT 1500# RADIAL FLANGE	SA-181-70	
F3 2	6" 150# ANSI REF.SO. FLANGE	SA-105	
F3 2	6" SCH.80 PIPE X 7 1/2" LONG	SA-106-B	
F3 2	.134 X 8 5/8" O.D. X 6 5/8" I.D. BACKING RING	C1010/SA-36	
F4 1	2"-NPT 1500# FLAT FLANGE	SA-181-70	
F5 1	3/4"-NPT 1500# RADIAL FLANGE	SA-181-70	
M1 1	12" X 16" X 3/4" X 4" 300# MANWAY	SA-6/5-70/SA-106-C	
S2 2	1/4" X 15 11/16" X 48" SADDLE BRACKET	C1008	
S3 4	1/4" X 6" X 10 11/16" GUSSET	C1008	
A1 2	3/4" X 5" X 12" STANDARD LIFT LUG FOR HORIZ.		
NP 1	ASME DATA PLATE	C1010	A84388

MANWAY DETAIL

6" NOZZLE DETAIL



NOTES  
 BREAK ALL EXPOSED INTERIOR NOZZLE EDGES  
 ALL FLANGE BOLT HOLES TO STRADDLE VESSEL CENTERLINES

SPECIFICATIONS

O.D. 48 LGH. 144  
 MAMP 165 PSI @ 450 F  
 SH. MAT'L.  
 HD. MAT'L.  
 QAL. 1060 SA.  
 WT. 2200 CU.FT.

CRN. ---  
 WELD DETAILS: M-1932  
 STD. TOLERANCES (UNLESS OTHERWISE NOTED): M-2461  
 CODE ASME SECT.VIII, DIV.1  
 PER DATE OF DWG/LAST REV

**MANCHESTER**  
 TANK  
 Q:\3000

48" X 144"  
 STANDARD AIR REC.

DRAWN BY  
 DATE  
 SCALE: NONE  
 DRAWING NO. 302493

SW/ DATE BY	REVISION	APP XREF REV